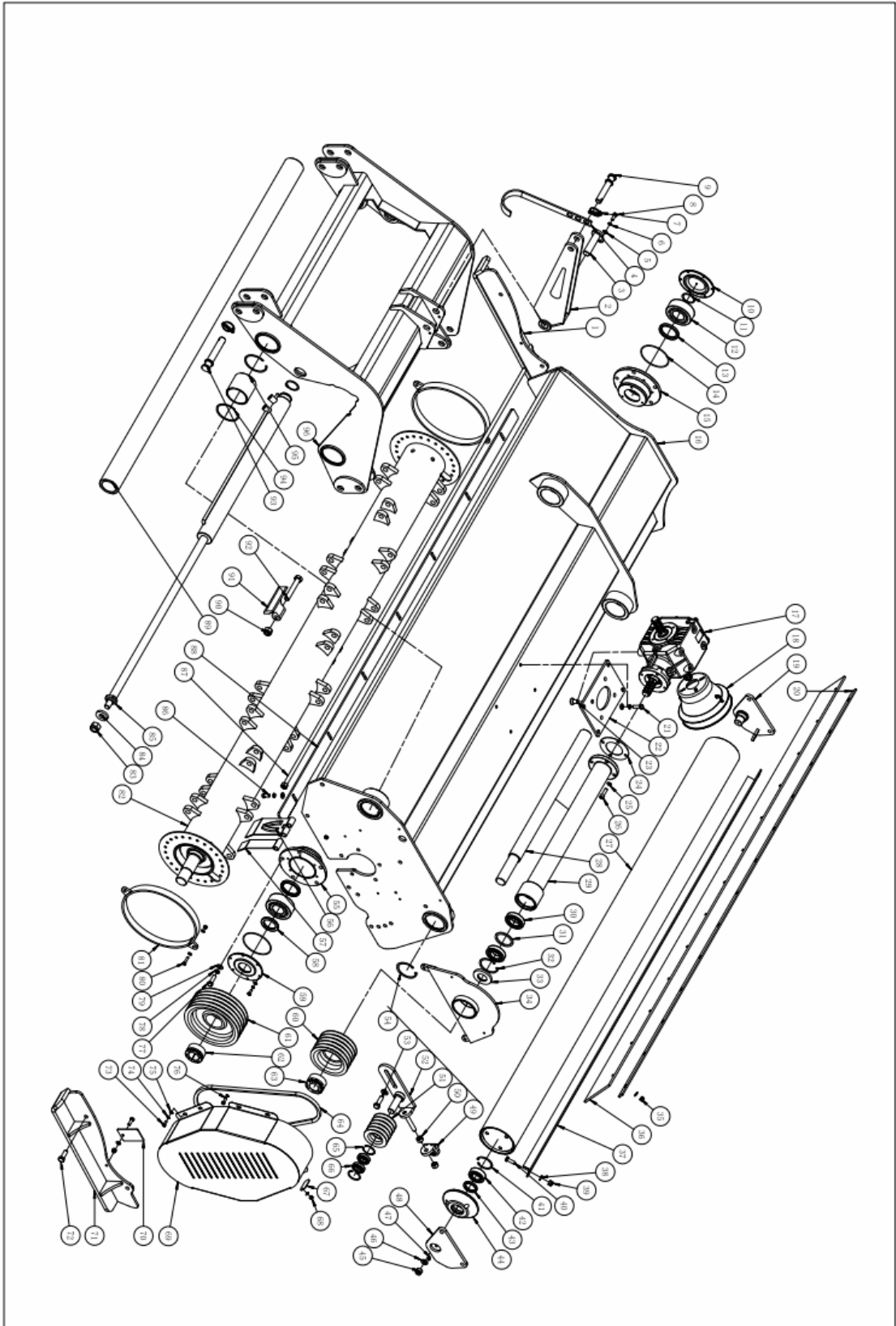


VCDH MAIN DRAWING



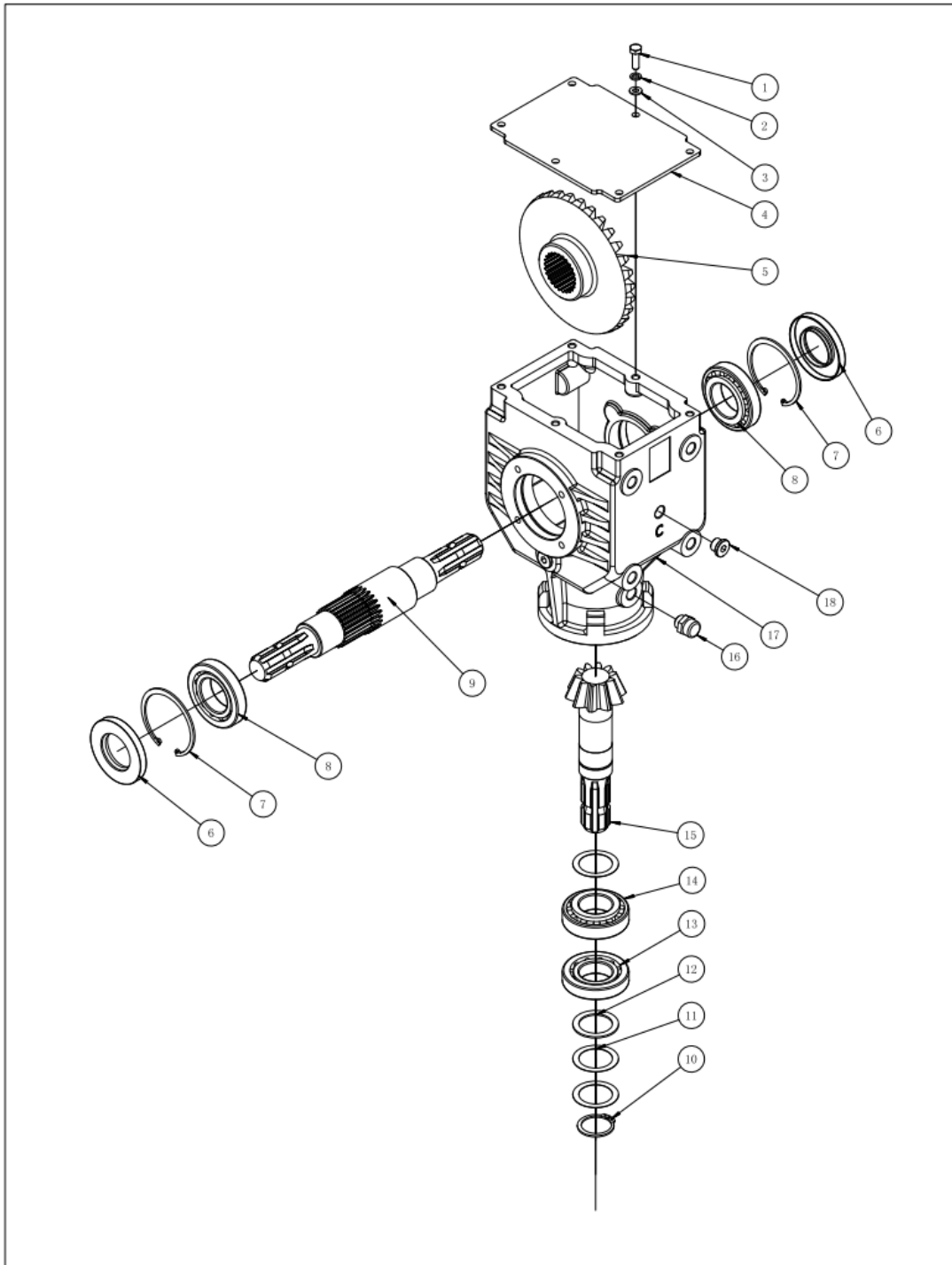
VCDH MAIN PARTS LIST

Item	Part No.	Description	Qty	Remaks
1	VCD300-016	right slide plate	1	
2	AG300-013	upper suspension connection weldment	1	
3	AG300-018	connecting pin	1	
4	AG300-114	hook	1	
5	GB/T 97.1	plain washer 10	16	
6	GB 93-87	spring washer 10	1	
7		lockpin \varnothing 12	3	
8	GB/T 5783	bolt M10x30	3	
9	AG300-111	upper suspension pin	1	
10	AG300-104	oil cover 1	1	
11	GB 894.1-86	circle 55	2	
12	GB/T 288-94	Spherical roller bearings22311	2	
13	GB/T 13871.1	oil seal 90x70x10	2	
14		O-ring	2	
15	AG300-121	right&left bearing seat	1	
16	AG260-011	deck coverweldment	1	
17	AG300-054	gearbox assembly	1	
18	AG300-125	dust cover	2	
19	AG300-020	left roller connection plate	1	
20	AG260-107	rubber plate	1	
21	GB/T 5783	bolt M12 x 40	4	
22	AG300-112	gearbox support plate	1	
23		head screw M16x30	4	
24	AG300-128	paper gasket	1	
25	GB 93-87	spring washer12	15	
26	GB/T 70.1	Hexagon socket head cap screwM12 x 40	4	
27	AG260-025	roller weldment	1	
28	AG300-102	transmission shaft	1	
29	AG300-023	transmission tube	1	
30	GB/T 276-94	rolling bearing6209	2	
31	AG300-119	adjusting check ring for thansmission	1	
32	GB 893.1-86	circle 85	1	
33		oil seal 85x45x10	1	

34	AG300-016	shaft tube support weldment	1	
35	GB/T 889.1	locknut M10	15	
36	AG260-108	rubber plate	1	
37	AG260-106	scraping angle bar	1	
38	GB/T 97.1	plain washer12	13	
39	GB/T 889.1	locknut M12	2	
40	GB/T 5783	bolt M12 x 35	2	
41	GB 893.1-86	circle 72	2	
42	GB/T 288-94	rolling bearing 22207	2	
43	GB/T 13871.1	oil seal 45x62x10	2	
44	AG300-105	roller bearing seat	2	
45	GB/T 889.1	locknut M16	10	
46	GB/T 97.1	plain washer 16	11	
47		grease nipple M8*1	4	
48	AG300-019	right roller connection plate	1	
49	AG300-015	tension fix plate	1	
50	GB/T 6170	nut M16	2	
51	AG300-116	tension belt wheel	1	
52	AG300-014	tension wheel adjusting plate	1	
53	GB/T 5783	bolt M16 x 50	1	
54	GB 893.1-86	circle 92	4	
55	AG300-124	right&left bearing seat	1	
56	AG300-120	back plate	25	
57	AG300-127	back plate adjusting	1	
58	GB/T 13871.1	oil seal 55x80x10	1	
59	AG300-118	oil cover 2	1	
60	AG300-115	small belt pulley	1	
61	AG300-117	big belt pulley	1	
62		big tension sleeve	1	
63		small tension sleeve	1	
64		V-belt 17x1500	5	
65	GB 893.1-86	circle 55	2	
66	GB/T 276-94	rolling bearing6006	2	
67	VCD300-103	belt pulley cover baffle	2	
68	GB/T 889.1	locknut M8	6	
69	AG300-022	belt pulley cover	1	
70	AG300-103	dust protective plate	2	
71	VCD300-015	left slide plate	1	
72	GB/T 5783	bolt M16 x 45	8	

73	GB/T 5783	bolt M8 x 20	20	
74	GB 93-87	spring washer 8	20	
75	GB/T 97.1	plain washer 8	30	
76	GB/T 5783	bolt M8 x 25	2	
77	GB/T 5783	bolt M14 x 45	10	
78	GB 93-87	spring washer 14	10	
79	GB/T 97.1	plain washer 14	10	
80	GB/T 5782	bolt M8 x 35	4	
81	AG300-017	blade shaft ring-protective sleeve	2	
82	AG260-026	blade shaft	1	
83	GB/T 889.1	locknut M24x2	1	
84	AG300-122	oil cylinder connection spacer	1	
85		oil cylinder	1	
86	GB/T 5783	bolt M12x25	7	
87	AG260-024	backplate shaft	1	
88	AG260-113	inner adjusting plate	1	
89	AG300-101	guide rail	2	
90	GB/T 889.1	locknut M20	1	
91	AG300-123	blade	26	
92	GB/T 5782	bolt M20 x 120	26	
93	AG300-110	lower suspension pin	2	
94	AG300-126	spring check ring	8	
95	AG300-109	guide rail sleeve	4	
96	AG300-012	main suspension weldment	1	

VCDH GEARBOX DRAWING



VCDH GEARBOX PARTS LIST

Item	Part No.	Description	Qty	Remaks
1	GB/T 5783	bolt M8 x 25	6	
2	GB/T 93-87	spring washer 8	6	
3	GB/T 97.1	plain washer 8	6	
4	AG300-054.05	close plate	1	
5	AG300-054.04	bevel gear 2	1	
6	GB 13871-92	oil seal 45x85x10	2	
7	GB 893.1-86	circle 85	2	
8	GB/T 297-94	conical roller bearing30209	2	
9	AG300-054.02	input shaft	1	
10	GB 894.1-86	shaft ring 40	1	
11		TZDP0.5	3	
12		TZDP2	1	
13	GB/T 297-94	conical roller bearing30208	1	
14	GB/T 297-94	conical roller bearing32208	1	
15	AG300-054.03	bevel gear 1	1	
16		breathable bolt G 3/8	1	
17	AG300-054.01	case	1	
18		plug ZG3/8	4	