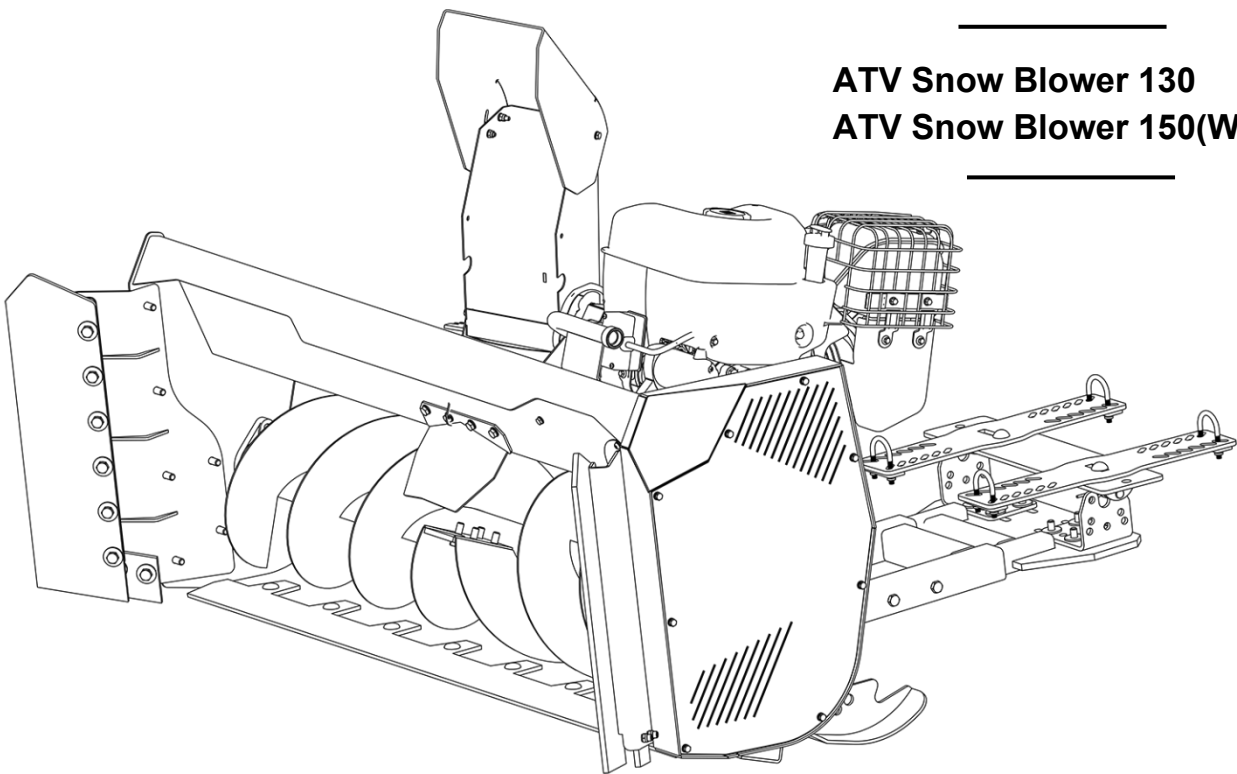


SNOW BLOWER

OPERATOR'S MANUAL

ATV Snow Blower 130
ATV Snow Blower 150(With Wings)



Please carefully read this manual and follow all the instructions. Failure to comply with the warnings and precautions may result in serious injury or death.

Table of Content

SAFETY PRECAUTIONS.....	3
Safety Always Comes First.....	3
EQUIPMENT SAFETY GUIDELINES	3
PREOPERATIONAL	4
OPERATION.....	5
CLEARING A CLOGGED DISCHARGE CHUTE:.....	6
MAINTENANCE AND STORAGE	6
SAFETY TRAINING.....	7
TRANSPORT SAFETY	7
Safety Signs and Model Decals	8
Safety signs.....	8
Safety decals.....	9
PRODUCT SPECIFICATION.....	10
Implement Specification	10
Implement Identification	11
UNPACKING	12
PRODUCT OVERVIEW.....	13
ASSEMBLY & SET-UP.....	14
Fixed bracket assembly Connection	14
Housing Assembly Connection	15
ATV Hook-up	16
OPERATION	20
Check-list Before Operation.....	20

Adjustment & Control	20
Engine Start	21
Starting	26
Tightening Torque	26
STORAGE & TRANSPORT	27
Storage	27
Transport	27
EXPLODED VIEWS & PARTS LIST	28
WARRANTY	49

SAFETY PRECAUTIONS

Safety Always Comes First

YOU must ensure that you and anyone else who is going to operate, maintain or work around the machine is familiar with the operating and maintenance procedures and related safety information contained in this manual. This manual is prepared to guide you through all essential operations related to this machine and alert you to all good safety practices that should be strictly followed.

Please read the instruction manual carefully to understand the performance and characteristics of the machine before use. Correct operation and maintenance will bring you higher production efficiency, and also reduce the cost of use and prolong the service life.

Careful operation is your best insurance against an accident. Read this section carefully before operating the vehicle and accessory. Failure to observe the following safety instructions could result in serious injury. All operators, no matter how experienced they may be, should read this and other manuals related to the vehicle and accessory before operating. It is the owner's legal obligation to instruct all operators in safe operation of the accessory.

EQUIPMENT SAFETY GUIDELINES

1. Safety of the operator and bystanders is one of the main concerns in designing and developing equipment. However, every year many accidents occur which could have been avoided by a few seconds of thought and a more careful approach to handling equipment. You, the operator, can avoid many accidents by observing the following precautions in this section. To avoid personal injury or death, study the following precautions and insist those working with you, or for you to follow them.
2. In order to provide a better view, certain photographs or illustrations in this manual may show an assembly with a safety shield removed. However, equipment should never be used in this condition. Keep all shields in place. If shield removal becomes necessary for repairs, replace the shield prior to use.
3. Replace any safety sign or instruction sign that is not readable or is missing. Location of such safety signs is indicated in this manual.
4. Never use alcoholic beverages or drugs which can hinder alertness or coordination while using this equipment. Consult your doctor about using this machine while taking prescription medications.
5. **Under no circumstances should young children be allowed to work with this equipment. Do not allow persons to use or assemble this unit until they have read this manual and have developed a thorough understanding of the safety precautions and of how it works.** Review the safety instructions with all users annually.
6. This equipment is dangerous to children and persons unfamiliar with its operation. The operator

should be a responsible, properly trained and physically able person familiar with machinery and trained in this equipment's operations. If the elderly are assisting with work, their physical limitations need to be recognized and accommodated.

7. Never exceed the limits of a piece of machinery. If its ability to do a job, or to do so safely, is in question - **DON'T TRY IT.**
8. Do not modify the equipment in any way. Un- authorized modification may result in serious injury or death and may impair the function and life of the equipment.
9. Install and secure all guards and shields before starting or operating.
10. Keep hands, feet, hair and clothing away from moving parts.
11. Never start or operate machine unless sitting on tractor seat.
12. Clear the area of bystanders, especially small children, as well as animals before starting.
13. Do not put hands or feet under machine while machine is running.
14. Objects can be thrown out from under machine with sufficient force to severely injure people. Stay away from machine when it is running. Keep others away.
15. Review safety instructions with all operators annually.

PREOPERATIONAL



1. Thoroughly inspect the area where the accessory is to be used and remove door mats, all foreign objects and the like.
2. For motorized accessories, disengage all clutches and shift into neutral before starting engine



3. **Handle fuel with care, it is highly flammable**
 - Use approved fuel container.
 - Never add fuel to a running engine or hot engine.
 - Fill fuel tank outdoors with extreme care. Never fill fuel tank indoors.
 - Never fill containers inside a vehicle, or on a truck or a trailer bed with a plastic liner. Always place containers on the ground, away you're your vehicle, before filling.
 - When practical, remove gas-powered equipment from the truck or trailer and refuel it on the ground. If this is not possible, then refuel such equipment on a trailer with a portable container, rather than from a gasoline dispenser nozzle.
 - Keep the nozzle in contact with the rim of the fuel tank or container opening at all times, until refueling is complete. Do not use a nozzle lock open device.
 - Replace fuel cap securely and wipe up spilled fuel.
 - If fuel is spilled on clothing, change clothing immediately.
4. **Do not operate the machine under the following conditions**

Do not operate the accessory without wearing adequate winter outer garments. Avoid loose fitting clothing that can get caught in moving parts. Wear footwear that will improve footing on slippery.
5. Let the vehicle and accessory adjust to outdoor temperatures before using.

6. Do not allow riders.
7. Install and secure all guards before starting.
8. Wear suitable ear protection for prolonged exposure to excessive noise.
9. Turn machine off, stop and disable engine, remove ignition key and place in your pocket, set park brake and wait for all moving parts to stop before servicing, adjusting, repairing or unplugging.
10. Clear the area of people, especially small children, before using the unit.
11. Review safety related items annually with all personnel who will be operating and maintaining. Never use an accessory without proper guards, plates, or other safety protective devices in place.
12. Always make sure to wear the appropriate safety equipment required (glasses, muffs, mask...) for each type of product. See operation section.
13. Always make sure of having safe traction on the vehicle by using the recommended accessories (chains, A.T.V. tracks, counterweights...). See operation section.
14. Always make sure that all components are correctly installed. (driveline securely attached and locked at both ends, belts properly installed...)
15. Always handle the winch cable with thick leather gloves.
16. **Never modify the accessory or any part without the written consent from the manufacturer.**

OPERATION

1. Do not put hands or feet near, under or inside rotating parts.
2. Exercise extreme caution when operating on or crossing gravel drives, walks or roads. Stay alert for hidden hazards or traffic. Do not carry passengers.
3. After striking a foreign object, stop the engine (motor), disconnect the wire from the spark plug(s) and keep wire away to prevent accidental starting. Thoroughly inspect the accessory for any damage and repair damage before restarting and using the accessory.
4. If the unit should start to vibrate abnormally, stop the engine (motor) and check immediately for the cause. Vibration is generally a warning of trouble.
5. Take all possible precautions when leaving the vehicle unattended. Disengage the power take-off, lower the attachment, place the transmission into neutral, set the parking brake, stop the engine and remove the contact key.
6. Do not run the engine indoors, except when starting the engine and for transporting in or out of the building. Do not operate or let motor run in a storage area without ventilation because gas contains carbon monoxide which is odorless, colorless and can cause death.
7. Never use the accessories across the face of slopes, go from top to bottom. Exercise extreme caution when using equipment on slopes. Do not attempt to clear a steep slope.
8. Never tolerate bystanders in the working zone. Never use an accessory in the direction of bystanders, it might throw gravel or debris that can hurt people or damage property.
9. Never operate the accessory at high transport speeds on slippery surfaces. Use care when backing up.
10. Do not carry passengers.

11. Disengage power to the accessory when it is transported or not in use.
12. Never operate the accessory without good visibility or light.
13. Keep the accessory away from heat sources or flames.
14. Never handle the winch cable or hook while in tension.
16. Use only accessories approved by the manufacturer of the snow blower (such as wheel chains, and the like).
17. Never operate the snow blower without good visibility or light

CLEARING A CLOGGED DISCHARGE CHUTE:

Hand contact with the rotating impeller inside the discharge chute is the most common cause of injury associated with snow blowers. Never use your hand to clean out the discharge chute.

To clear the chute:

1. Lower snow blower to the ground and set parking brake.
2. SHUT THE ENGINE OFF & REMOVE KEY!
3. Wait 10 seconds to be sure the all moving parts such as the impeller blades have stopped moving.
4. Disconnect wire from the spark plug(s) and keep wire away to prevent accidental starting.
5. Always use a clean-out tool of at least 36" in length, NOT YOUR HANDS.

MAINTENANCE AND STORAGE

1. When cleaning, repairing or inspecting the vehicle and accessory, make certain that all moving parts have stopped. For gasoline engine, disconnect wire from the spark plug(s) and keep wire away to prevent accidental starting.
2. Check shear bolts, engine mounting bolts, and other bolts at frequent intervals for proper tightness to be sure the snow blower is in safe working condition
3. Never store a motorized accessory with fuel in the fuel tank inside a building where ignition sources are present such as hot water and space heaters, clothes dryers, and the like. Allow the engine to cool before storing in any enclosure.
4. Always refer to the owner's manual when you store the accessory and vehicle for a prolonged or an unspecified length of time.
5. Maintain or replace safety and instruction labels, as necessary.
6. For winter accessories, (if applicable), let the engine run for a few minutes after clean snow in order to prevent the rotary parts from freezing.
7. Inspect the vehicle's and accessory's air filter (if applicable) every day. Clean it or replace it as necessary. Change the oil more often when working in dusty conditions. See the vehicle's and accessory' s owner's manual.

SAFETY TRAINING

1. Safety is a primary concern in the design and manufacture of our products. Unfortunately, our efforts to provide safe equipment can be wiped out by a single careless act of an operator or bystander.
2. In addition to the design and configuration of equipment, hazard control and accident prevention are dependent upon the awareness, concern, prudence and proper training of personnel involved in the operation, transport, maintenance and storage of this equipment.
3. It has been said, "The best safety feature is an informed, careful operator." We ask you to be that kind of an operator. It is the operator's responsibility to read and understand ALL Safety and Using instructions in the manual and to follow these. Accidents can be avoided.
4. Working with unfamiliar equipment can lead to careless injuries. Read this manual before assembly or using, to acquaint yourself with the machine. If this machine is used by any person other than yourself, or is loaned or rented, it is the machine owner's responsibility to make certain that the operator, prior to using:
 - a. **Read and understand the operator's manuals.**
 - b. **Is instructed in safe and proper use.**
6. Train all new personnel and review instructions frequently with existing workers. Be certain only a properly trained and physically able person will use the machinery. A person who has not read and understood all using and safety instructions is not qualified to use the machine. An untrained operator exposes himself and bystanders to possible serious injury or death. If the elderly are assisting with the work, their physical limitations need to be recognized and accommodated.
7. Read this owner's manual carefully. Be thoroughly familiar with the controls and proper use of the vehicle and accessory. Know how to stop the unit and disengage the controls quickly.
8. Never allow children to operate the vehicle nor the accessory. Never allow adults to operate the vehicle nor the accessory without proper instructions.
9. No one should operate the vehicle nor the accessory while intoxicated or while taking medication that impairs the senses or reactions.
10. Keep the area of operation clear of all people particularly small children and pets.

TRANSPORT SAFETY

1. Read this owner's manual carefully. Be thoroughly familiar with the controls and proper use of the vehicle and snow blower. Know how to stop the unit and disengage the controls quickly.
2. Never allow children to operate snow blower nor the vehicle. Never allow adults to operate snow blower nor the vehicle without proper instructions.
3. No one should operate the vehicle nor the snow blower while intoxicated or while taking medication that impairs the senses or reactions.
4. Keep the area of operation clear of all persons, particularly small children and pets.
5. Comply with state and local laws governing safety and transporting of machinery on public roads.
6. Check that all the lights, reflectors and other lighting requirements are installed and in good working condition.
7. Do not exceed a safe travel speed. Slow down for rough terrain and cornering.

8. Do not drink and drive.
9. Be a safe and courteous driver. Always yield to oncoming traffic in all situations, including narrow bridges, intersections, etc. Watch for traffic when operating near or crossing road- ways.
10. Never allow riders on the machine.

Safety Signs and Model Decals

Safety signs

⚠ WARNING

TO AVOID PERSONAL INJURY:

- READ AND FOLLOW ALL INSTRUCTIONS AND SAFETY PRECAUTIONS IN OWNER'S MANUAL.
- KEEP HANDS, FEET AND CLOTHING AWAY FROM POWER DRIVEN PARTS.
- BEFORE LEAVING YOUR TRACTOR, LOWER AND DISENGAGE SNOWBLOWER, SET PARKING BRAKE, STOP ENGINE AND REMOVE IGNITION KEY.
- WAIT FOR ALL MOVING PARTS TO STOP BEFORE ADJUSTING, LUBRICATING, CLEANING OR UNCLOGGING SNOWBLOWER.
- KEEP THE AREA OF OPERATION CLEAR OF ALL PERSONS, ESPECIALLY SMALL CHILDREN & PETS.
- KEEP ALL GUARDS AND SHIELDS IN PLACE.

⚠ ATTENTION

POUR ÉVITER DES BLESSURES:

- LIRE LE MANUEL DU PROPRIÉTAIRE ET SUIVRE LES INSTRUCTIONS D'OPÉRATION ET DE SÉCURITÉ.
- GARDEZ LES MAINS, PIEDS ET VÊTEMENTS ÉLOIGNÉS DES ÉLÉMENTS MOBILES OU ROTATIFS.
- AVANT DE QUITTER VOTRE TRACTEUR, DÉBRAYEZ ET ABaissez LA SOUFFLEUSE, APPLIQUEZ LE FREIN DE STATIONNEMENT, ARRÊTEZ LE MOTEUR ET ENLEVEZ LA CLÉ D'IGNITION.
- ASSUREZ-VOUS QUE TOUTES LES PIÈCES MOBILES SONT ARRÊTÉES AVANT DE RÉPARER, D'AJUSTER, DE LUBRIQUER OU DE DÉBLOQUER LA SOUFFLEUSE.
- GARDEZ TOUTE PERSONNE PARTICULIÈREMENT LES ENFANTS ET LES ANIMAUX ÉLOIGNÉS DES LIEUX D'OPÉRATION.
- GARDEZ TOUS LES ÉCRANS PROTECTEURS EN PLACE.

⚠ DANGER



**TO AVOID SERIOUS INJURY:
KEEP HANDS, FEET & CLOTHING
AWAY FROM ROTATING AUGER
WHILE ENGINE IS RUNNING.**

**POUR ÉVITER DES BLESSURES GRAVES:
GARDEZ LES MAINS, LES PIEDS ET
LES VÊTEMENTS ÉLOIGNÉS
DE LA VIS SANS FIN LORSQUE
LE MOTEUR EST EN MARCHÉ**

⚠ DANGER



TO AVOID INJURY FROM DRIVE BELT:

- KEEP HANDS, FEET & CLOTHING AWAY.
- STOP ENGINE, REMOVE IGNITION KEY & WAIT FOR ALL MOVING PARTS TO STOP BEFORE COMING NEAR BELT.
- DO NOT ATTEMPT TO INSTALL OR REMOVE DRIVE BELT WITHOUT READING OWNER'S MANUAL.

ÉVITEZ LES BLESSURES PAR LA COURROIE:

- GARDEZ MAINS, PIEDS & VÊTEMENTS ÉLOIGNÉS.
- ARRÊTEZ LE MOTEUR, ENLEVEZ LA CLÉ DE CONTACT & ATTENDEZ QUE TOUTES LES PIÈCES MOBILES SOIENT ARRÊTÉES AVANT DE S'APPROCHER DE LA COURROIE.
- NE PAS TENTER D'INSTALLER OU D'ENLEVER LA COURROIE SANS LIRE LE MANUEL DU PROPRIÉTAIRE.

⚠ DANGER



**TO AVOID SERIOUS INJURY :
KEEP HANDS OUT OF THIS
DISCHARGE CHUTE WHILE
ENGINE IS RUNNING**

**POUR ÉVITER
DES BLESSURES GRAVES:
GARDEZ LES MAINS ÉLOIGNÉES
DE LA GOULOTTE LORSQUE
LE MOTEUR EST EN MARCHÉ**

⚠ WARNING

TO AVOID PERSONAL INJURY:

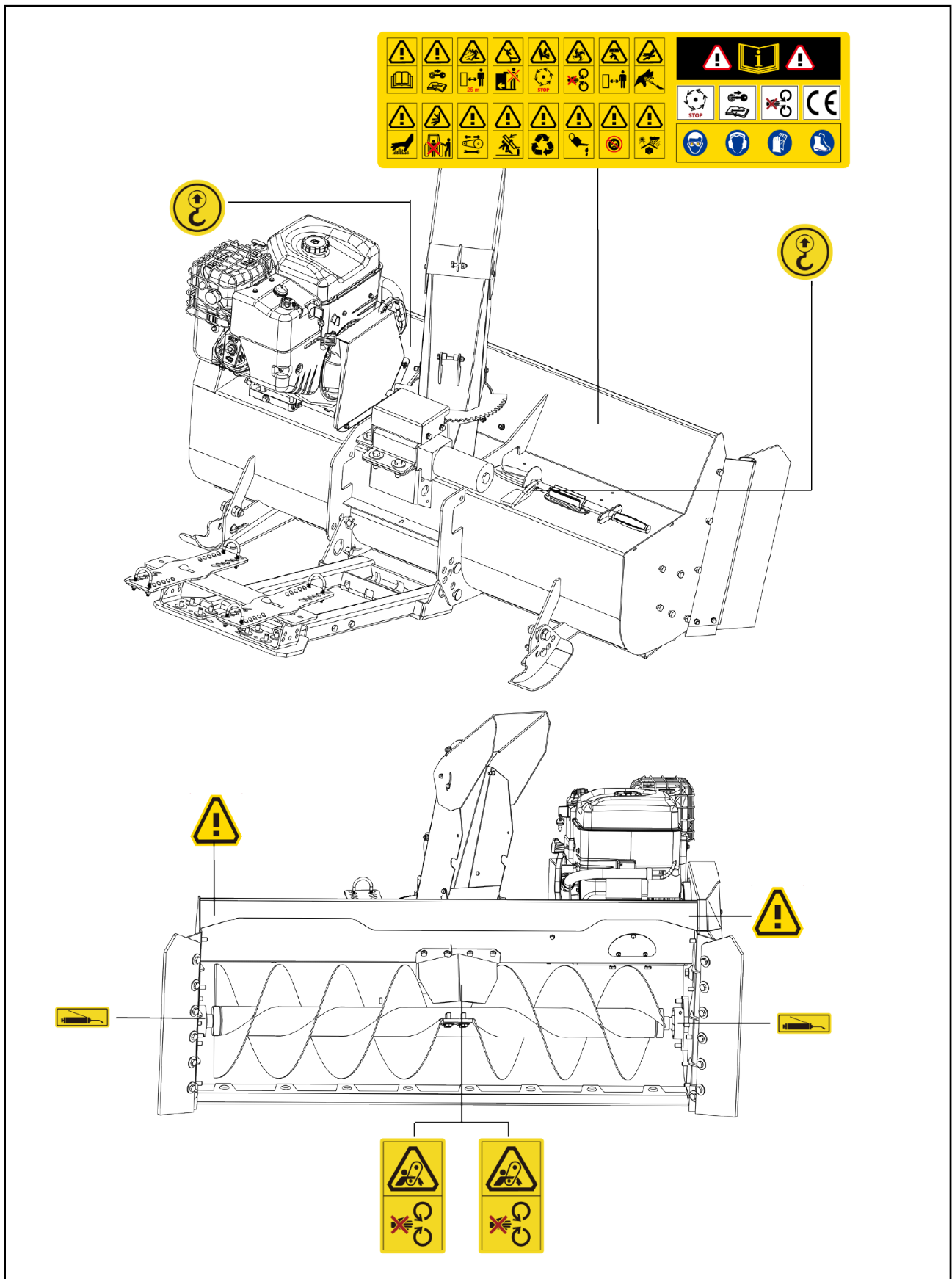
- READ AND FOLLOW INSTRUCTIONS AND SAFETY PRECAUTIONS IN OWNER'S MANUAL.
- DO NOT DRIVE AT MORE THAN 10 KM/HR WITH THE SNOWBLOWER IN RAISED POSITION.
- DO NOT DRIVE AT MORE THAN 3 KM/HR WITH SNOWBLOWER ON GROUND.
- DO NOT OPERATE ON SLOPES GREATER THAN 10%.
- APPROVED TIRE CHAINS ARE REQUIRED.

⚠ ATTENTION

POUR ÉVITER DES BLESSURES:

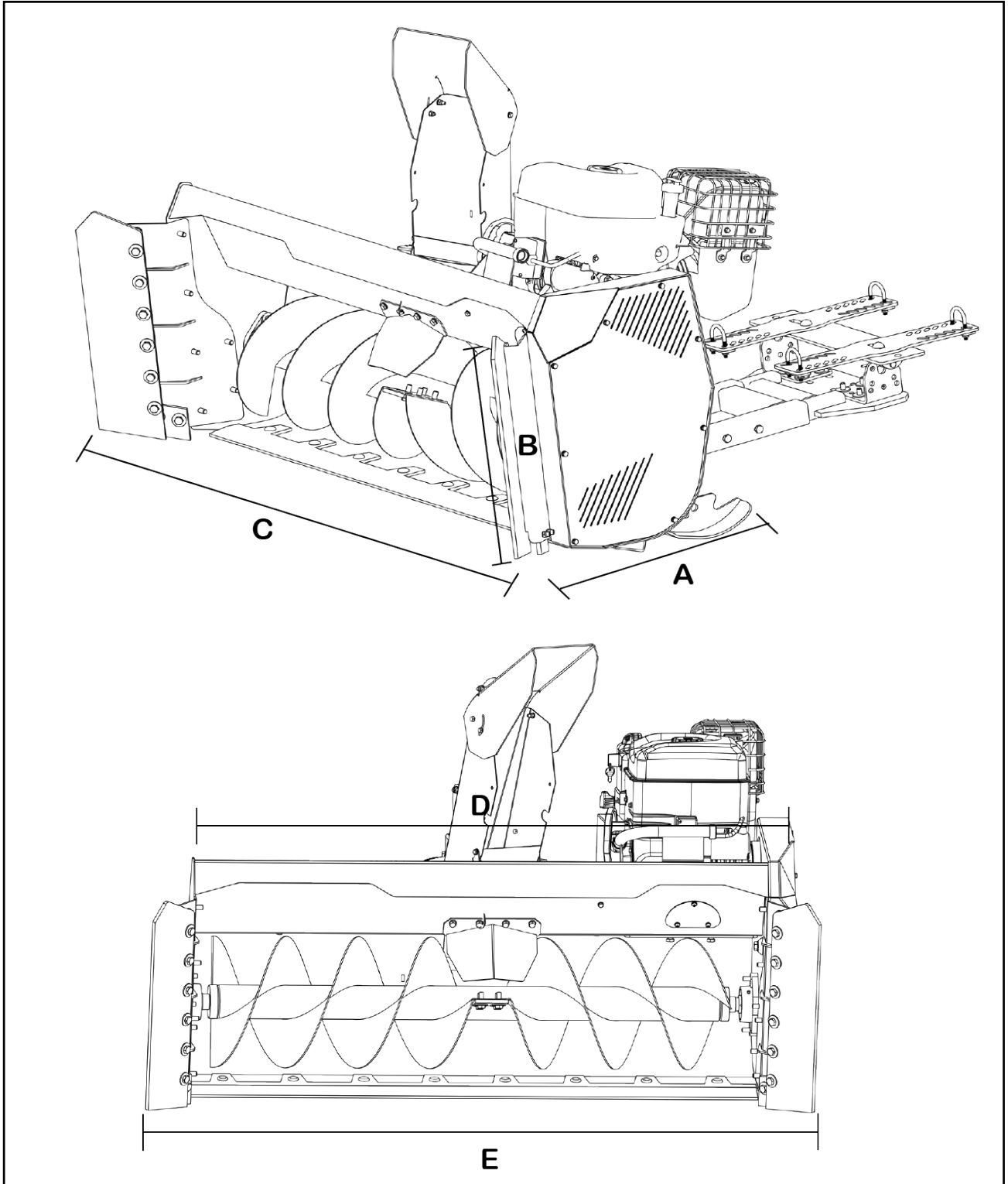
- LIRE LE MANUEL DU PROPRIÉTAIRE ET SUIVRE LES INSTRUCTIONS D'OPÉRATION ET DE SÉCURITÉ.
- NE PAS CONDUIRE À PLUS DE 10 KM/HEURE AVEC LA SOUFFLEUSE EN POSITION RELEVÉE.
- NE PAS CONDUIRE À PLUS DE 3 KM/HEURE AVEC LA SOUFFLEUSE ABaissÉE AU SOL.
- NE PAS OPÉRER DANS UNE PENTE DE PLUS DE 10%.
- DES CHAINES À PNEUS APPROUVÉES SONT REQUISES.

Safety decals



PRODUCT SPECIFICATION


Implement Specification



Model		ATV Snow Blower 130 ATV Snow Blower 150(With Wings)	
A	Length	mm	560
B	entrance height		460
C	fuselage width		1375
D	Length		1300
E	. working width		1.5m(ATV Snow Blower 130 +Wings = 150)
Weight	complete machine	kg	170
	Auxiliary device frame		25
Engine	model	LONCIN Snow Engine 190F(D)S 2100 420CC SNOW 15HP	
Start up	type	Easy pull start and electric start 230 V	
Fuel consumption	1-2L/H		
Fuel tank	3,0 L		
Electric control	electric, three functions - power off -Throwing tube turns -Throwing tube head angle adjustment		
snow blowing volume	1100m³/h=5km/h-full working width 20cm compacted snow		
Throwing distance	1-10 meters (speed and projection angle are adjustable, projection distance is affected by snow conditions)		

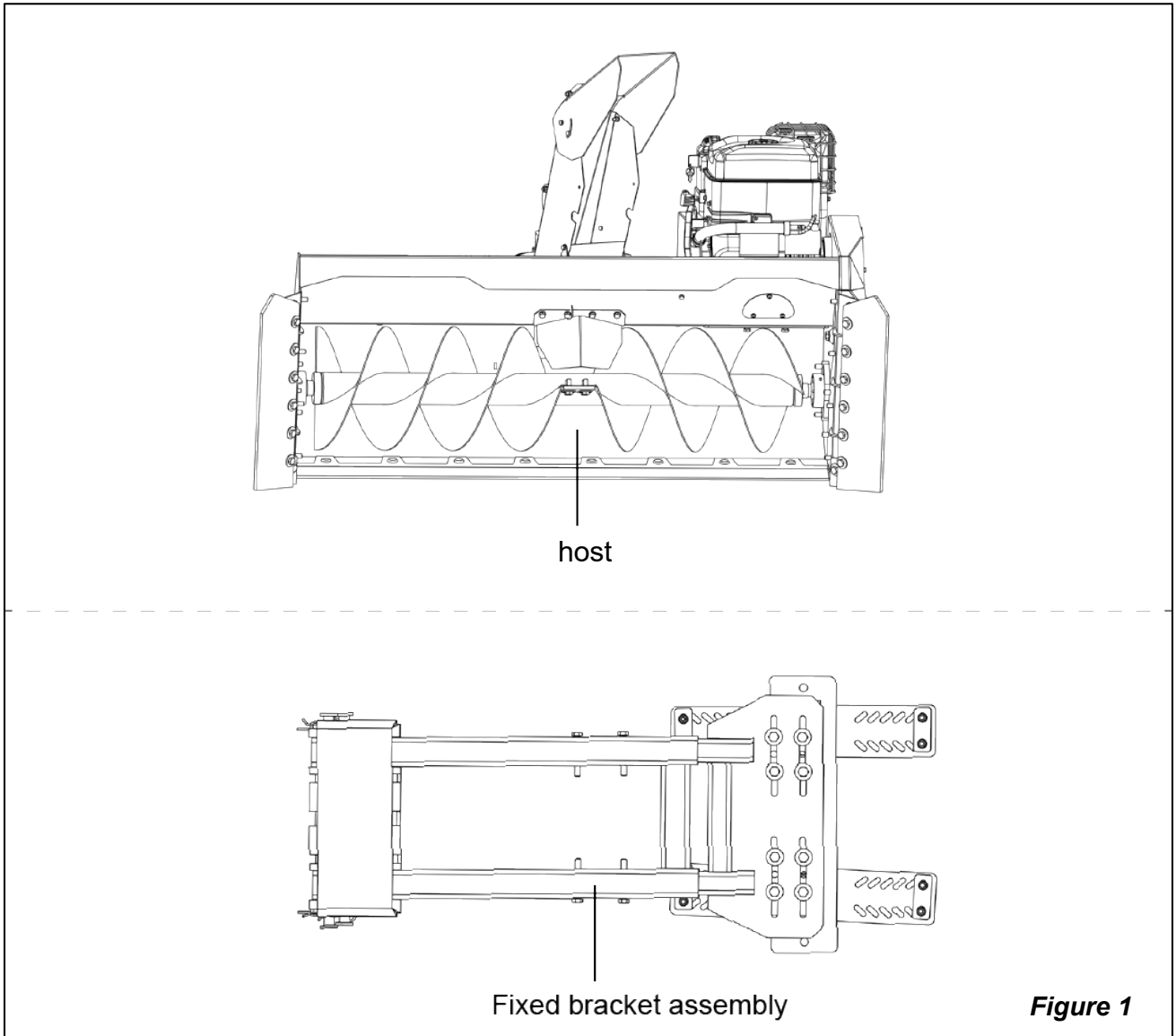
Implement Identification

An Identification plate is affixed to the frame of each implement. It contains the “CE” Certification brand and information about: the Manufacturer, Type, Serial Number, Model Number, Weight, The nameplate on the right is for reference only and is based on the real thing.

AGRI IMPLEMENT			
MODELL MODELLO MODEL	<input type="text"/>	SERIENNUMMER NUMERO MATRICOLA SERIAL NUMBER	<input type="text"/>
GEWICHT PESO WEIGHT	KG <input type="text"/>	MAX PSI MAX BAR MAX BAR	<input type="text"/>
		JAH ANNO YEAR	<input type="text"/>
MADE IN P.R.C.			

UNPACKING

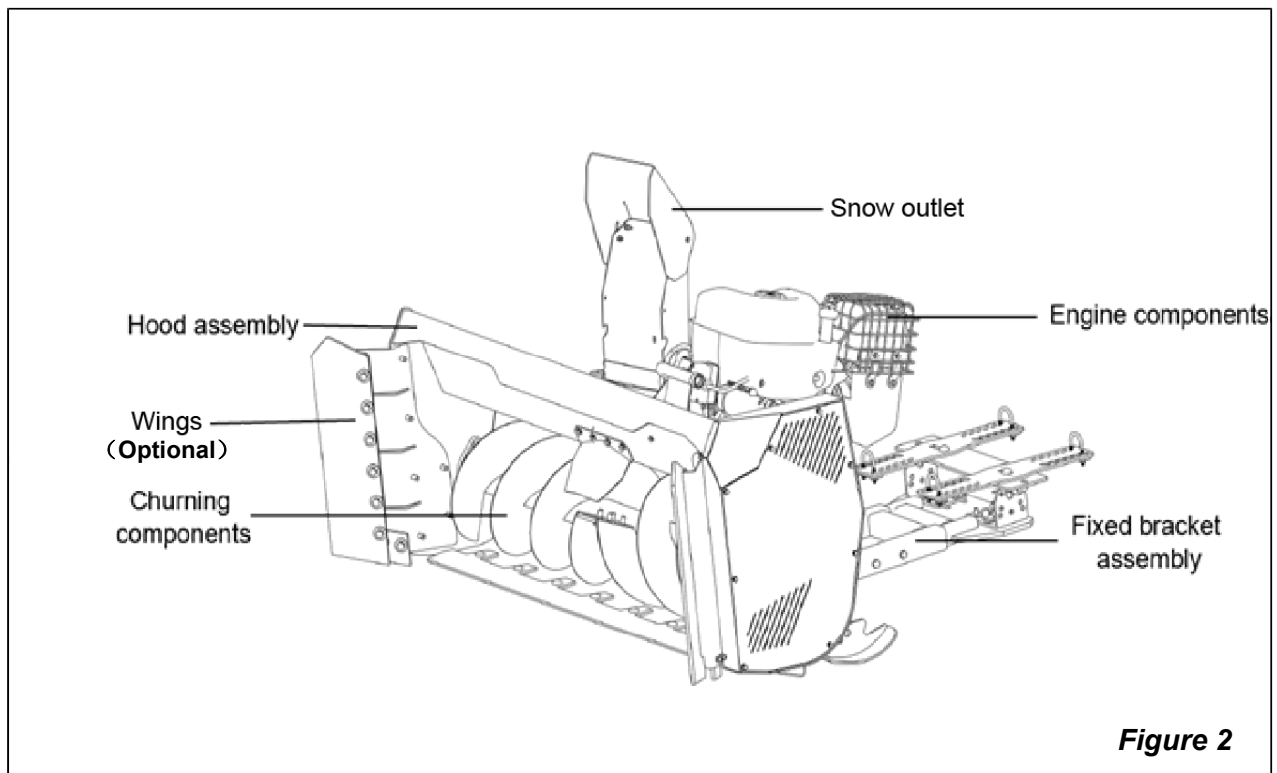
After unpacking, please check the components shown in **Figure 1**.



PRODUCT OVERVIEW

See Figure 2

This snow blower is designed to be lightweight and compact, so it can keep running well while working. It can work easily in snowy environments such as gardens and long driveways, as well as wet snow, and it has its own engine. This snow blower is flexible and efficient and can be easily connected to A.t.v.



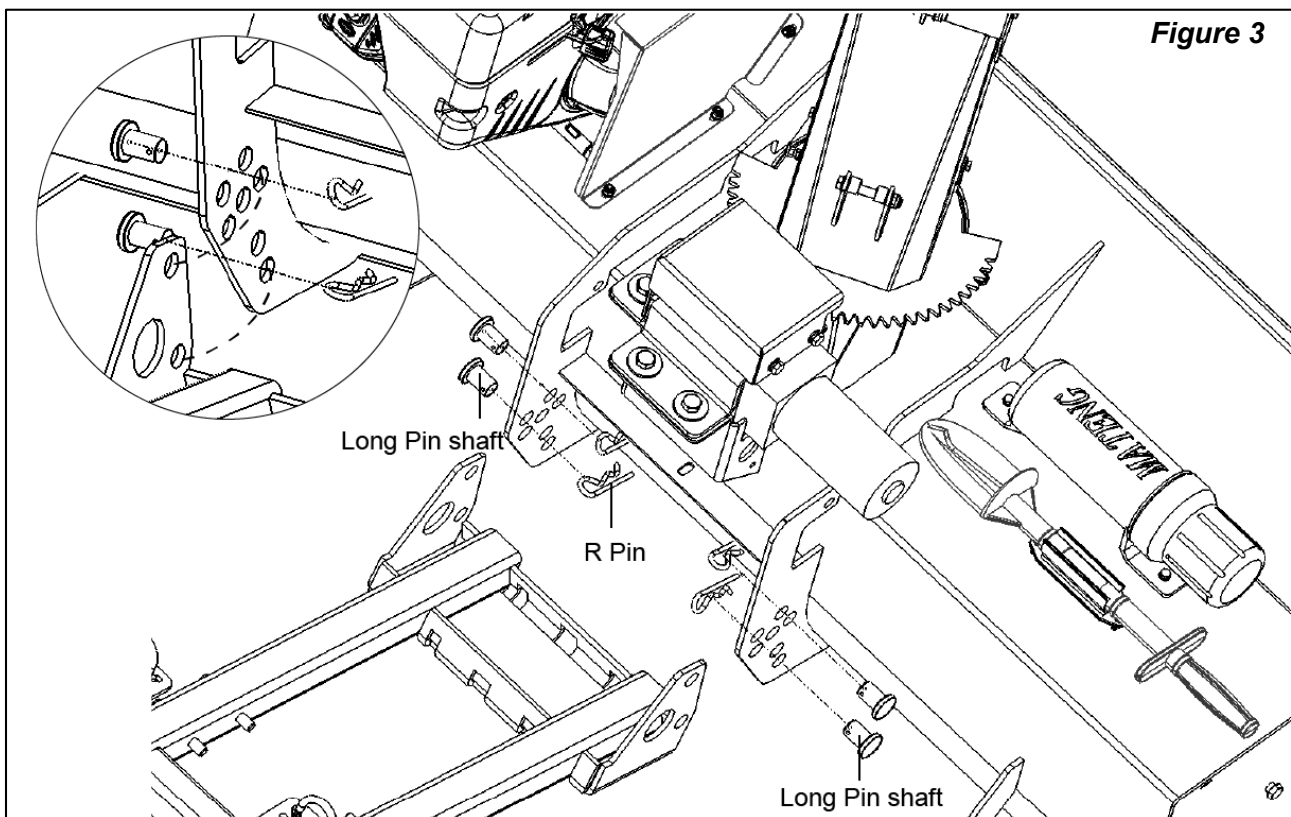
ASSEMBLY & SET-UP

Fixed bracket assembly Connection

Note: Follow the assembly order as below: Fixed bracket assembly, Housing Assembly.

See Figure 3

1. Join two hitch frames with fixing plates;
2. Secure the assembly with bolts, washers and nuts;
3. Tighten all the bolts to correct torque.



Note: Pay attentions to washers and nuts of different sizes used here.

See Figure 4

1. Secure the end with u-bolt, washer and locknut.
2. Tighten the bolt to correct torque;
3. Fasten the fixing frame to the atv chassis or beam with U-bolts.

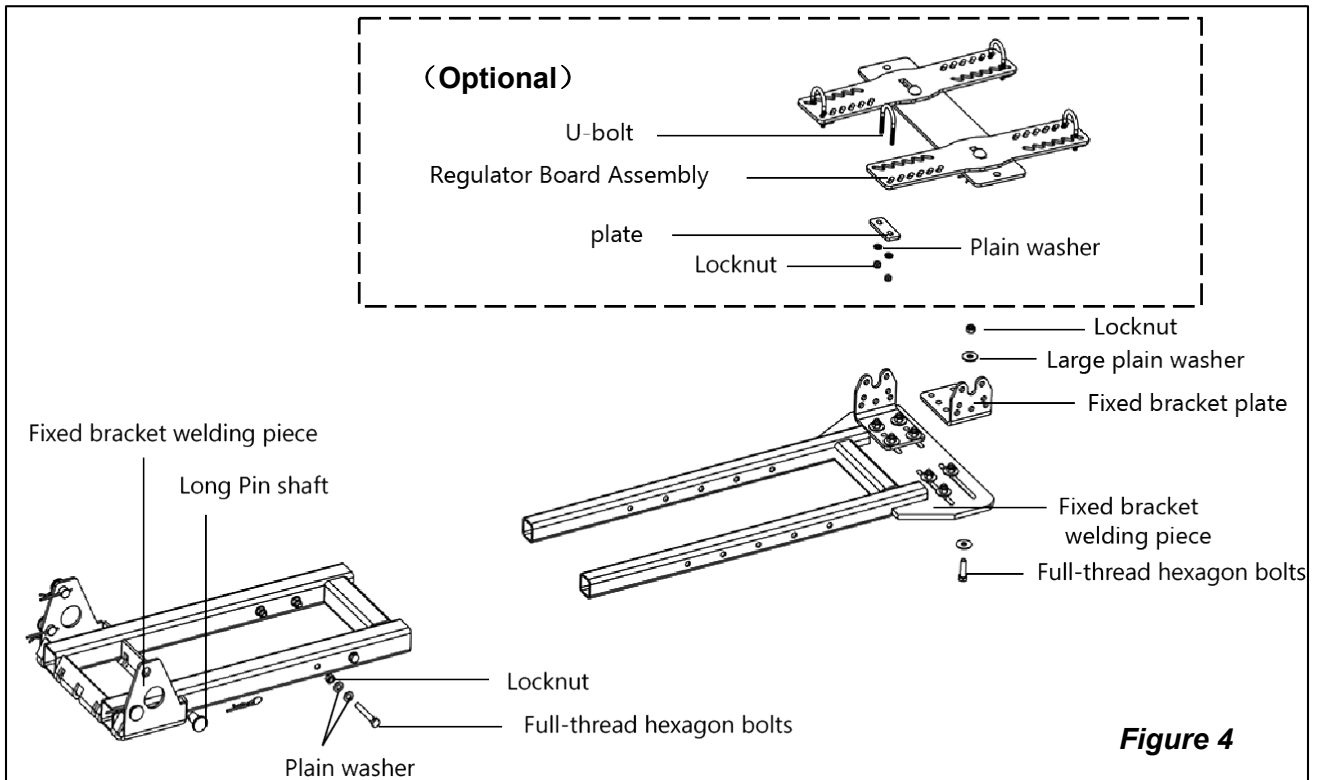


Figure 4

Housing Assembly Connection

See *Figure 5*

The snow outlet is fastened with nuts, and the height can also be adjusted

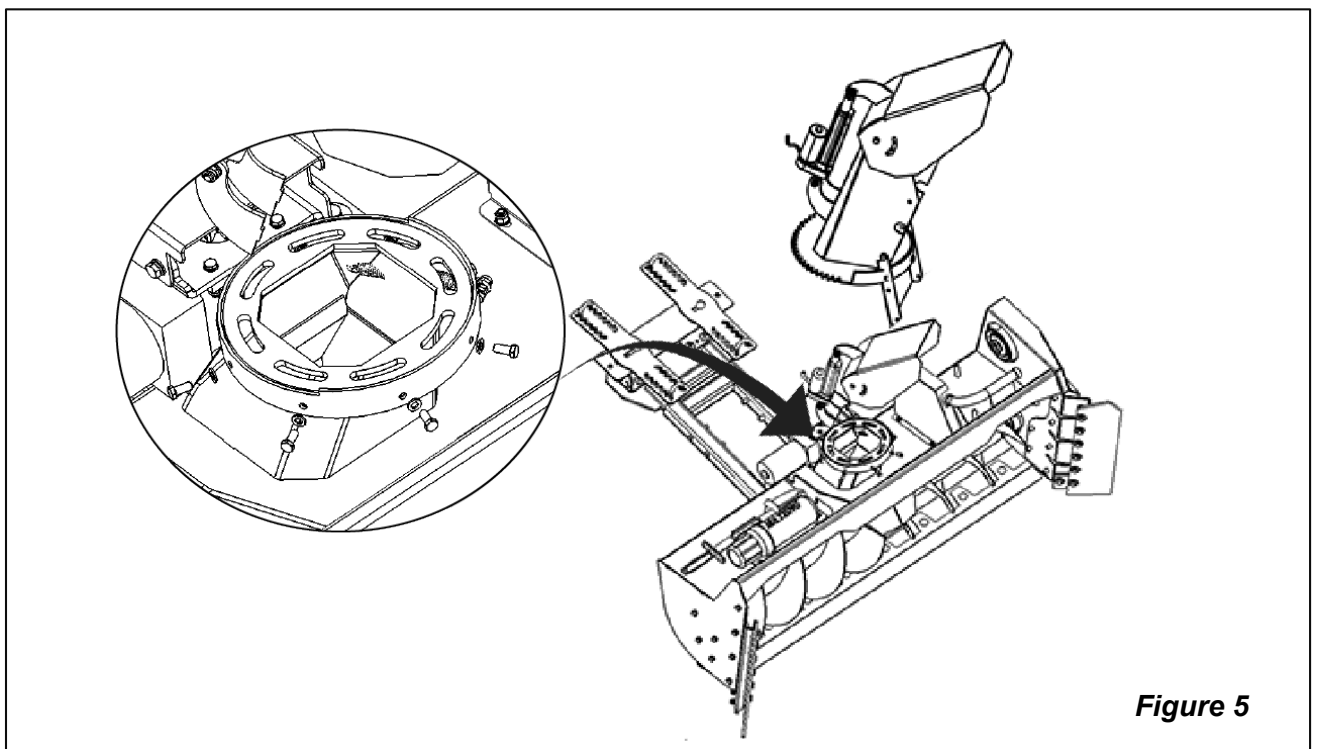


Figure 5

ATV Hook-up

See *Figure 6/6.1*

1. Attach the bottom of the ATV and secure with U-lock pins accordingly:
 - Unscrew the U-bolt and locknut on the fixing bracket, and then fix it on the pipe or beam of the A.T.V.
 - Attach the hook of the winch to the fixed bracket, the chain must be taut, parallel to the ground as shown.

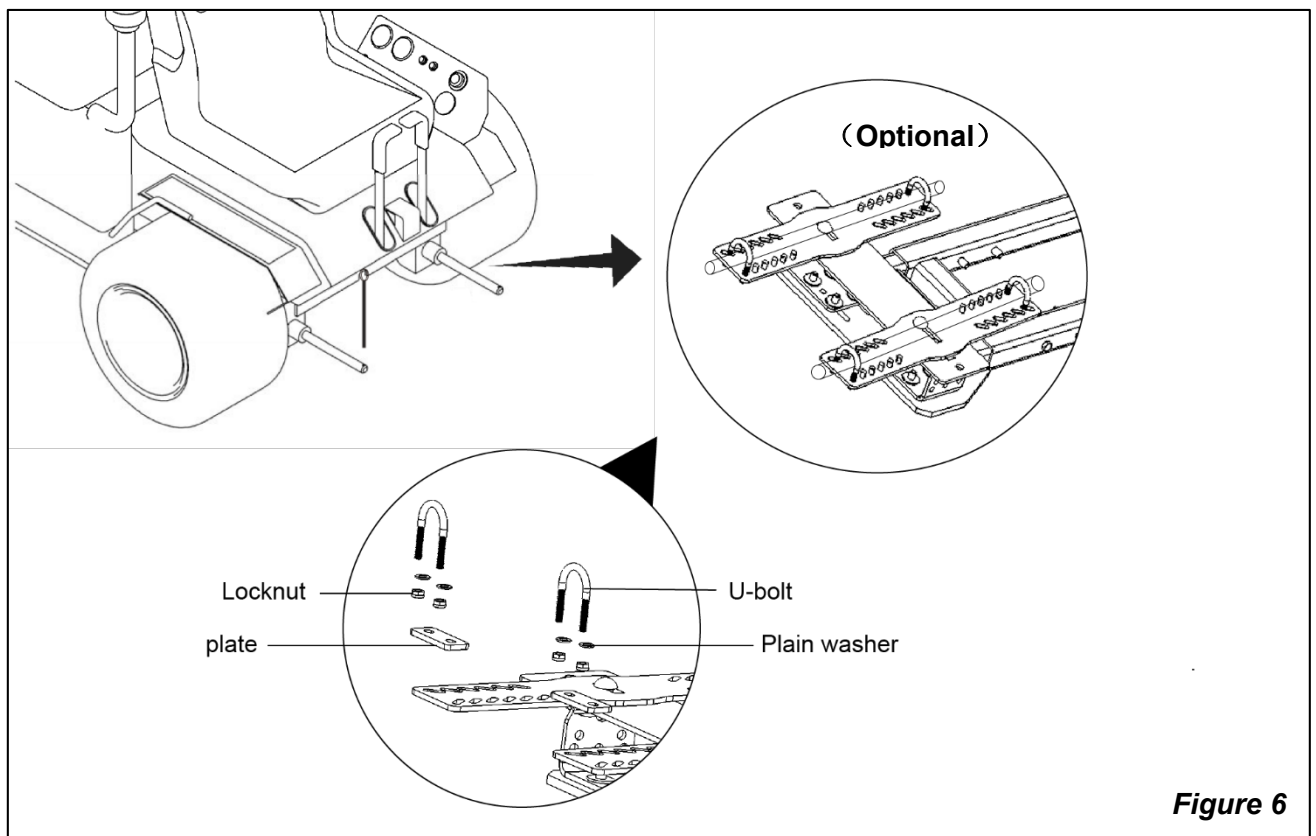


Figure 6

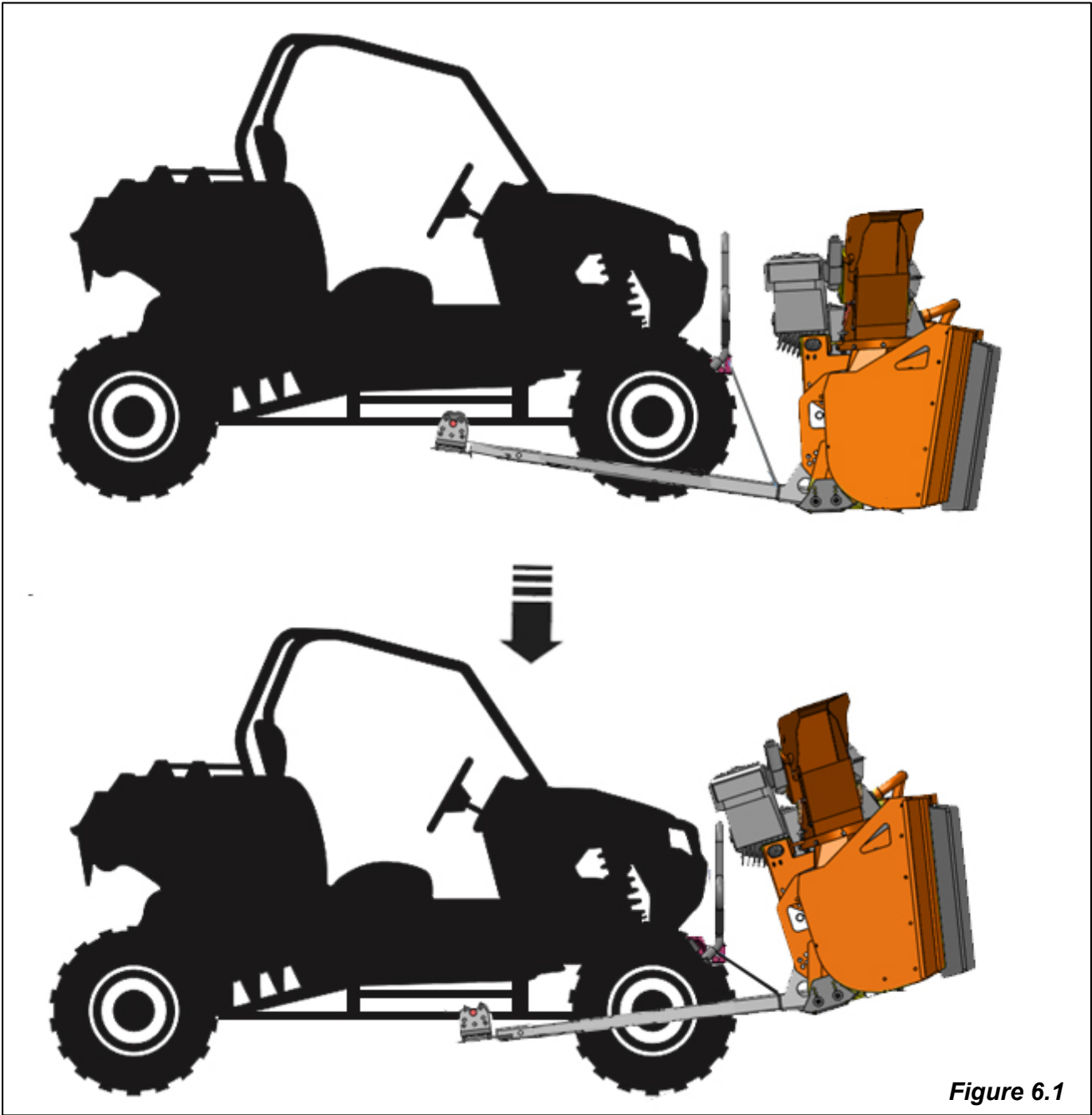
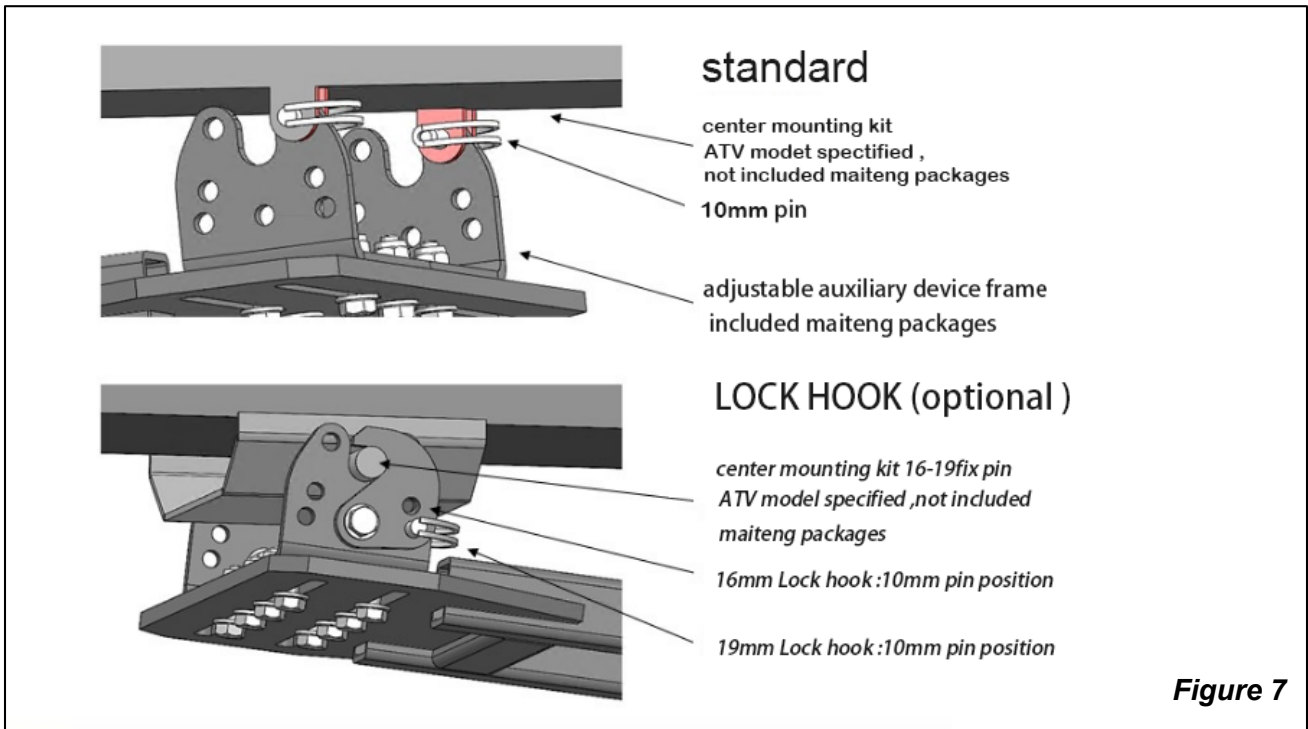


Figure 6.1

See Figure 7

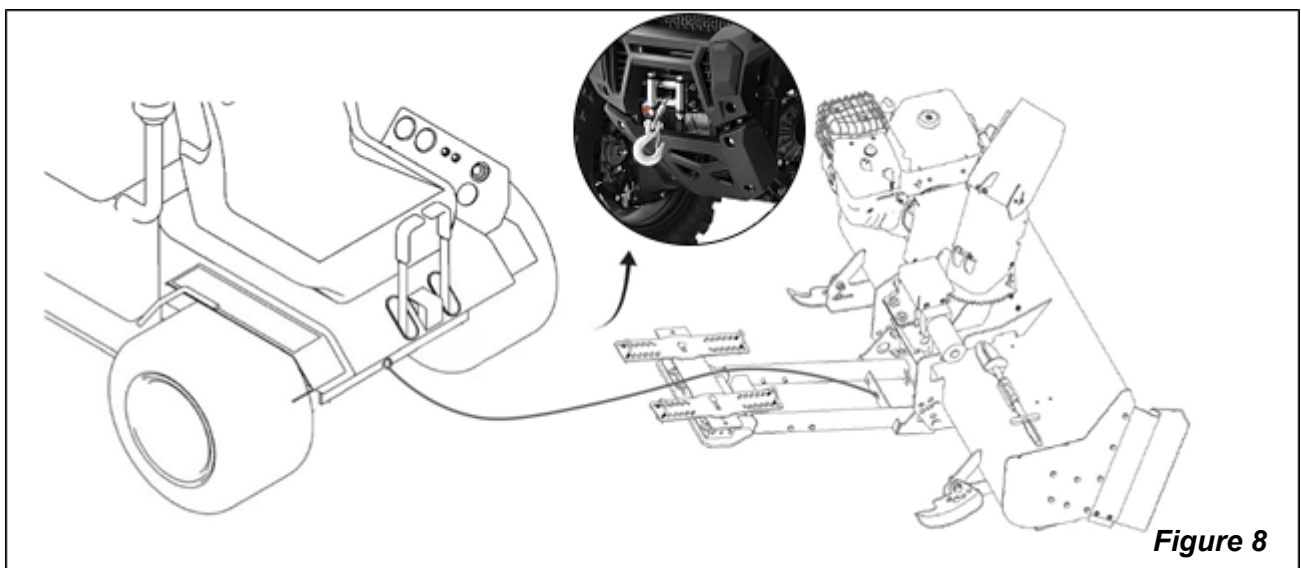
1. Center mounting kit, e.g. warn, Iron Bronco (not included package) ATV model specific..
2. Adjustable auxiliary device frame and 10mm pins include packet.



See Figure 8

Connect the snow blower and UTV, and install the Hook:

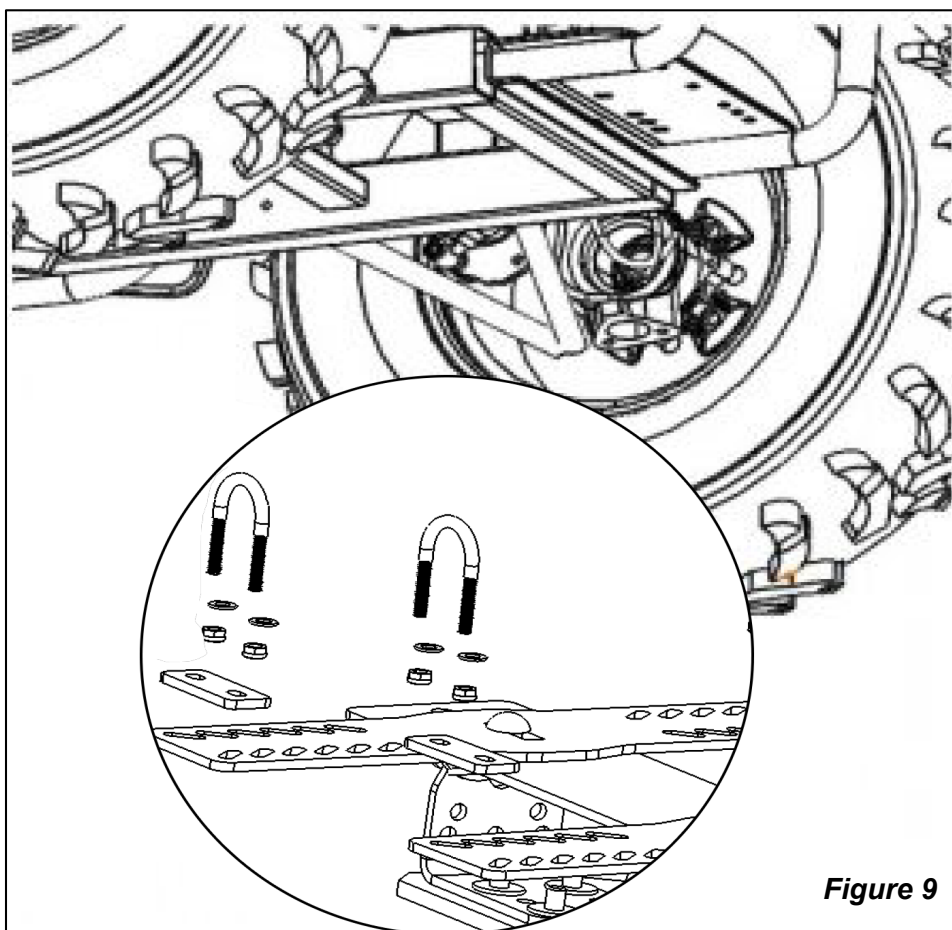
Remove the pin and the piston pin on the snowplow and mount the hook on the UTV to the snow blower, as shown in figure 7



See Figure 9

Tip: You can select two of the three holes on the connecting frame to adjust the distance between the snow blower.

Depending on the actual chassis of the different atv's a fixing plate is installed for attaching the snow blower. The picture below is for reference only.



OPERATION

Check-list Before Operation

CAUTION

- Hazard control and accident prevention are dependent upon the awareness, concern, prudence, and proper training involved in the operation, transport, storage, and maintenance of the machine. Therefore, it is absolutely essential that no one operates the machine without first having read, fully understood, and become totally familiar with the Operator's Manual. Make sure the operator has completed the Checklist below.
- The machine is delivered in accompany with a separate engine handbook, where all safety instructions related to engine operation and maintenance should be strictly followed.

Before operating the machine, the following areas should be checked off:

1. Make sure that all nuts, bolts and fittings are securely fixed, and that all packaging materials e.g. wire bands, tape etc. as well as any entangling materials in all rotating parts have been removed.
2. Check the engine oil and petrol in the tank.
3. Before starting up the machine, check and lubricate all grease points on the machine and engine.
4. Use only a towing vehicle with towing capacity within the required limit.
5. Check tire pressure.
6. Check the blades. Be sure they are not damaged or broken and swing freely in their mount. Repair or replace as required.
7. Check and tighten the blade bolts.
8. Install and secure all guards, doors and covers before starting.
9. Before cleaning, repairing and lubricating the machine, stop the engine and make sure all movable parts come to a full stop and allow for adequate time for the machine to cool down.

Adjustment & Control

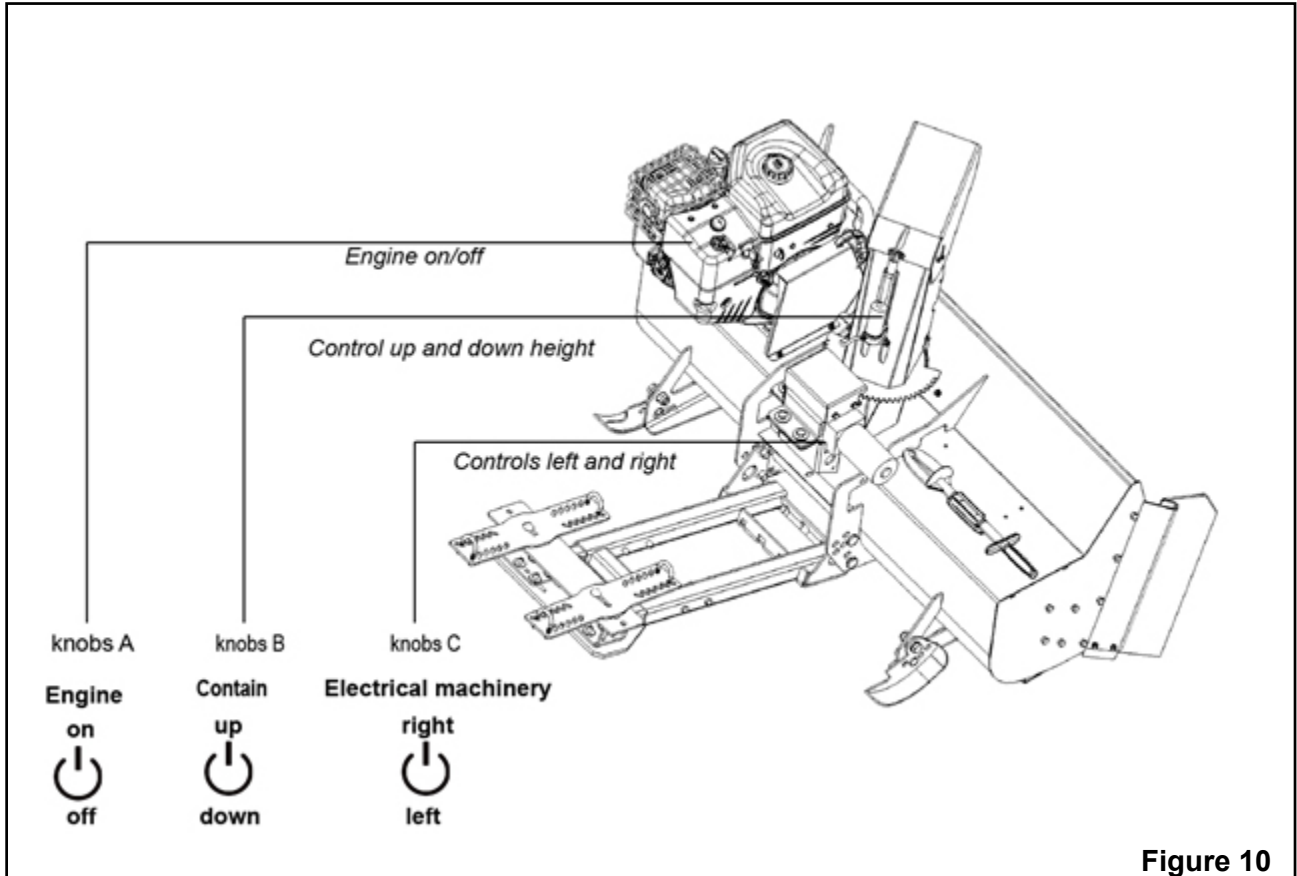
WARNING

By following a few precautions, you can help prevent accidents and ensure a safe and efficient snow plowing experience.

- Wear appropriate safety equipment, such as safety glasses, earplugs, and sturdy work boots.
- Keep bystanders away from this area, because the flying snow may obscure the sight of operators and passersby.
- Watch out for low hanging obstacles: Obstacles such as tree branches or overpasses. Be aware of your surroundings and adjust your driving style therefore. Be careful while reversing and avoid sharp turns.

See Figure 10

NOTE: This machine is equipped with a generator and control lever. Electrical control is realized by 3 control knobs (A/B/C).



Engine Start

WARNING

- Rapid retraction of starter cord (kickback) will pull hand and arm toward engine faster than you can let go. Broken bones, fractures, bruises or sprains could result.
- When starting engine, pull the starter cord slowly until resistance is felt and then pull rapidly to avoid kickback.
- Ensure that spark plug, muffler, fuel cap and air cleaner (if equipped) are in place and secured.
- Do not crank engine with spark plug removed.
- If engine floods, set choke (if equipped) to OPEN or RUN position, move throttle (if equipped) to FAST position and crank until engine starts.

NOTE: Before you start the engine, make sure you add oil according to the instructions in this manual. If you start the engine without oil, it will be damaged beyond repair and will not be covered under warranty.

See Figure 11

Easy pull start and electric start 230 V

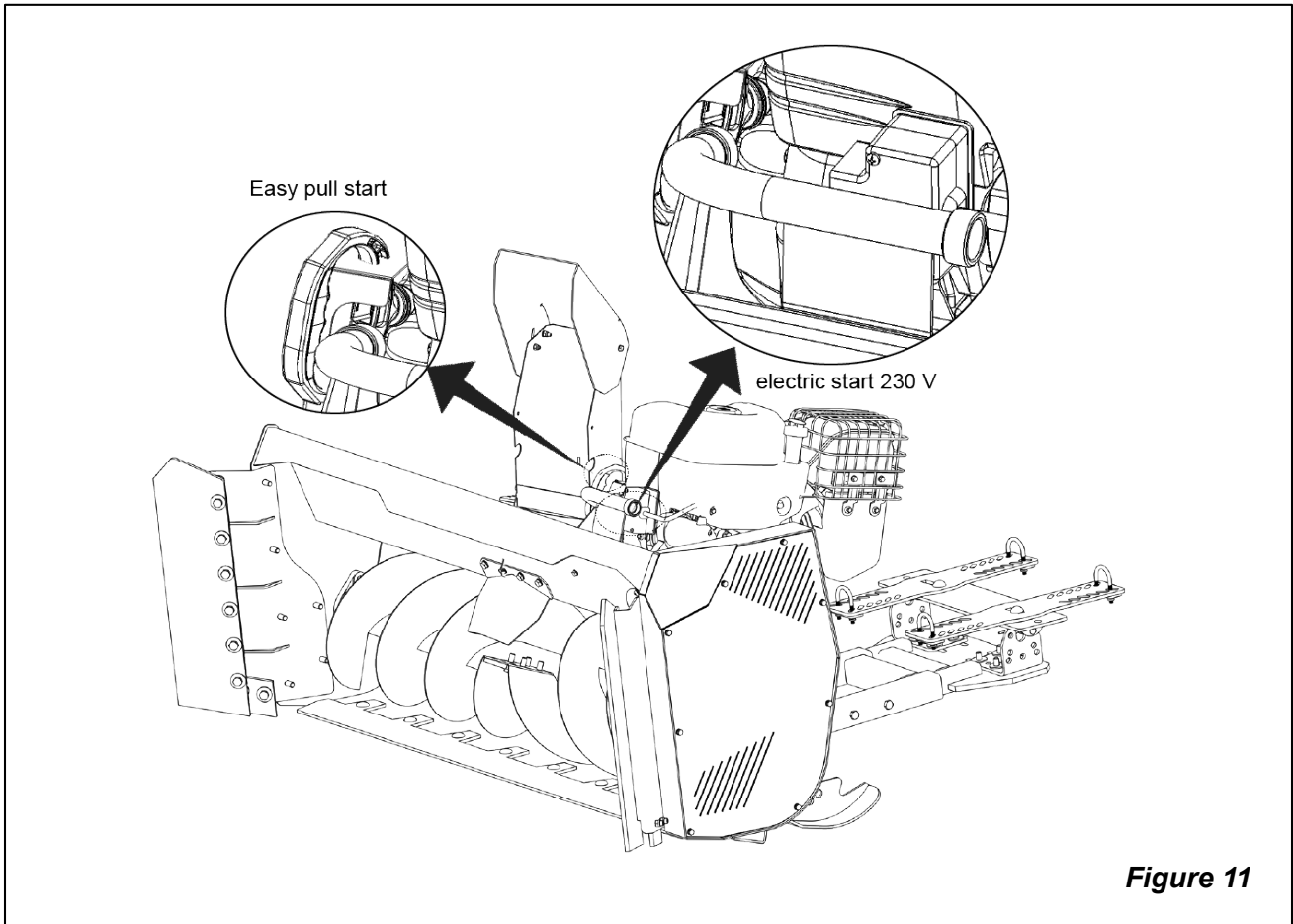
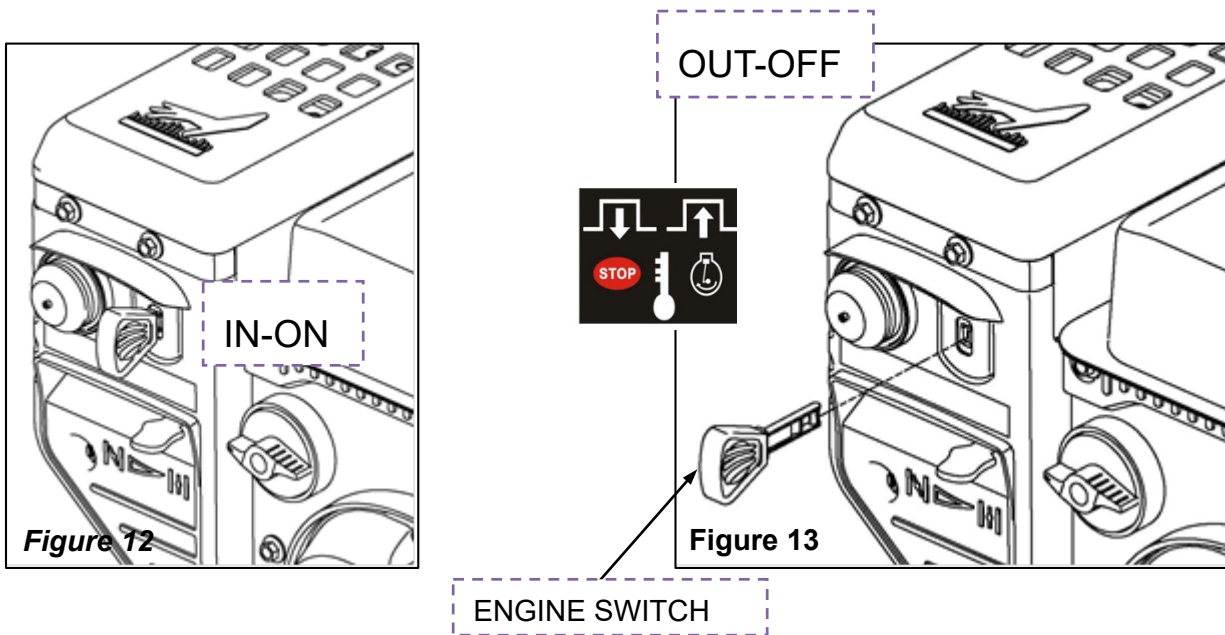


Figure 11

! WARNING

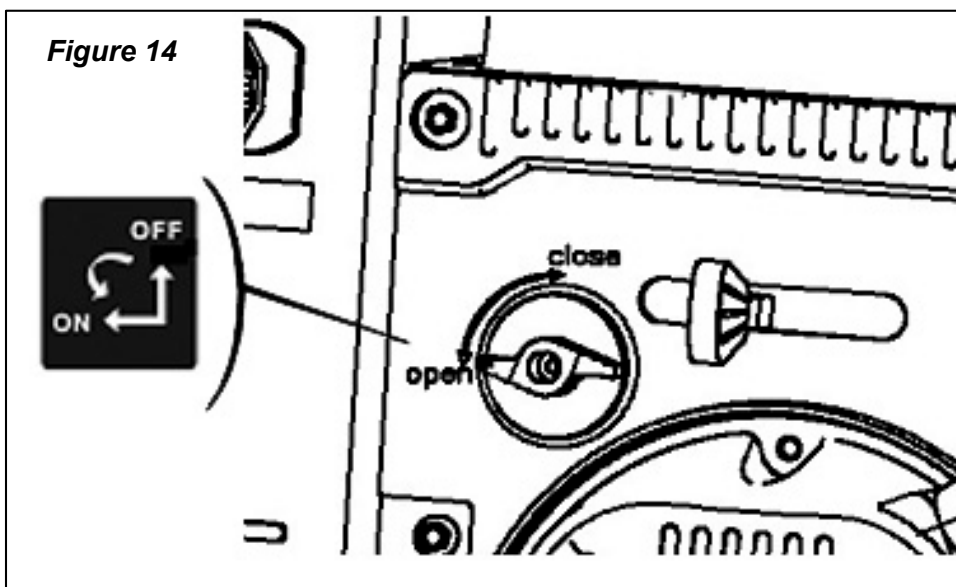
- Rapid retraction of the starter cord (kickback) will pull your hand and arm toward the engine faster than you can let go. Broken bones, fractures, bruises or sprains could result. When starting engine, pull the starter cord slowly until resistance is felt and then pull rapidly to avoid kickback.

See Figure 12/13



See Figure 14

NOTE: The fuel valve knob opens and closes the passage between the fuel tank and the carburetor. The fuel valve knob must be in the ON position for the engine to run. When the engine is not in use, leave the fuel valve knob in the OFF position to prevent carburetor flooding and to reduce the possibility of fuel leakage.

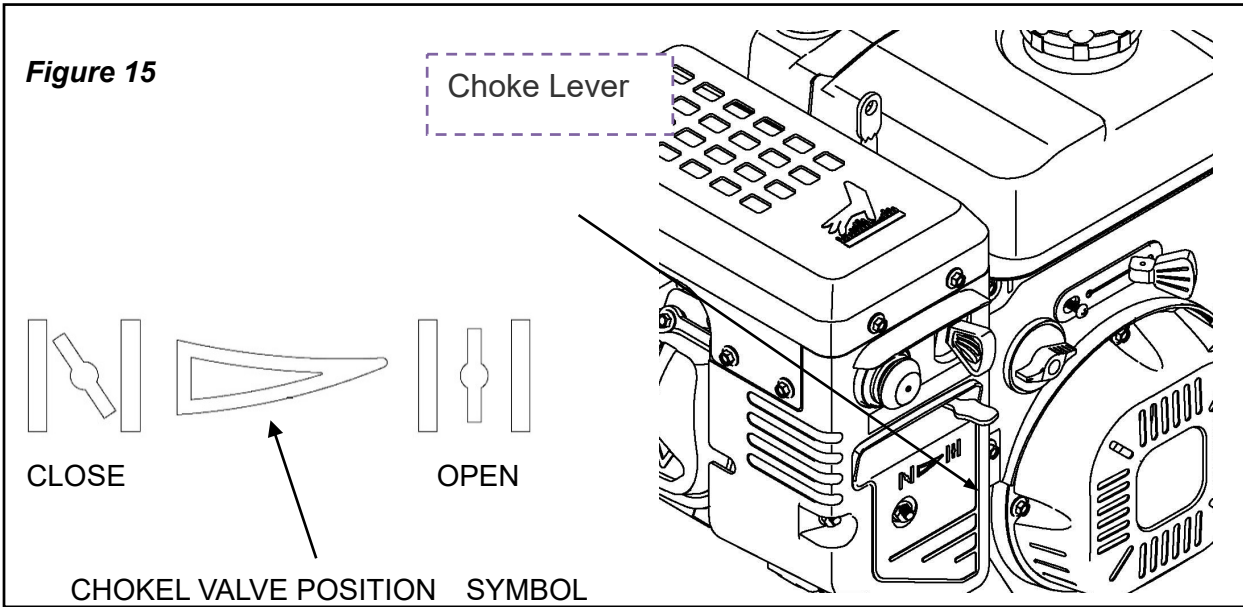


See Figure 15

The choke lever opens and closes the choke valve in the carburetor.

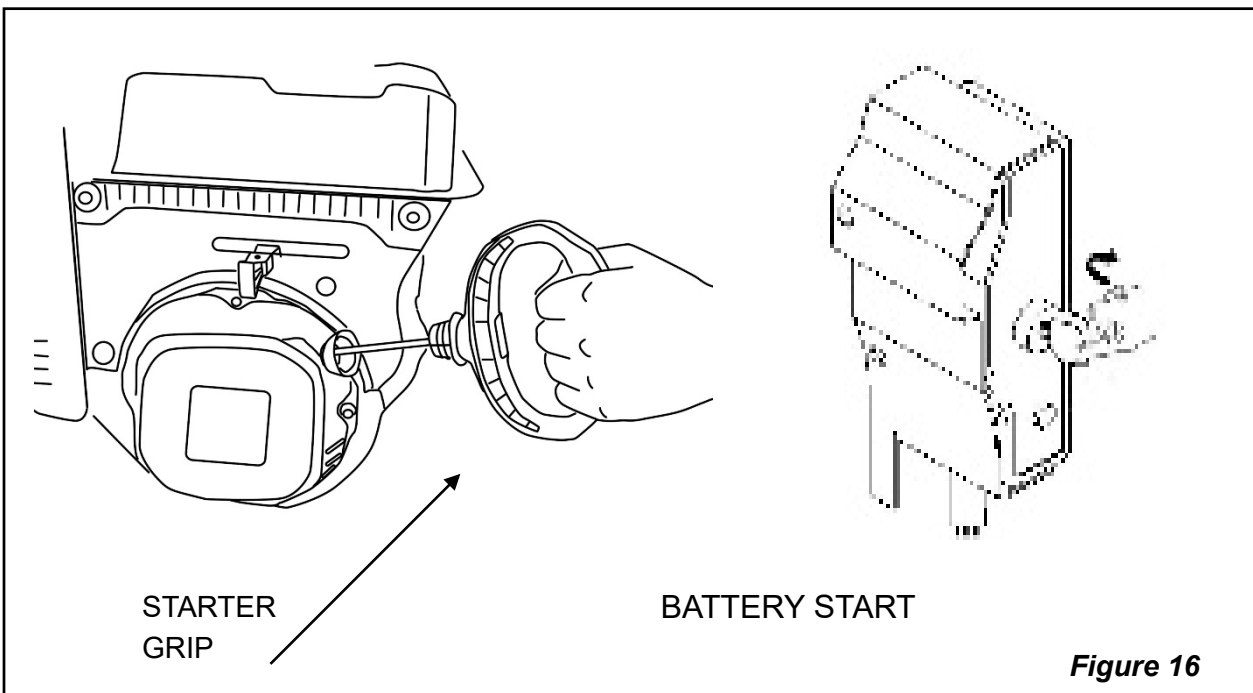
The CLOSE position enriches the fuel mixture for starting a cold engine.

The OPEN position provides the correct fuel mixture for operation after starting, and for restarting a warm engine.



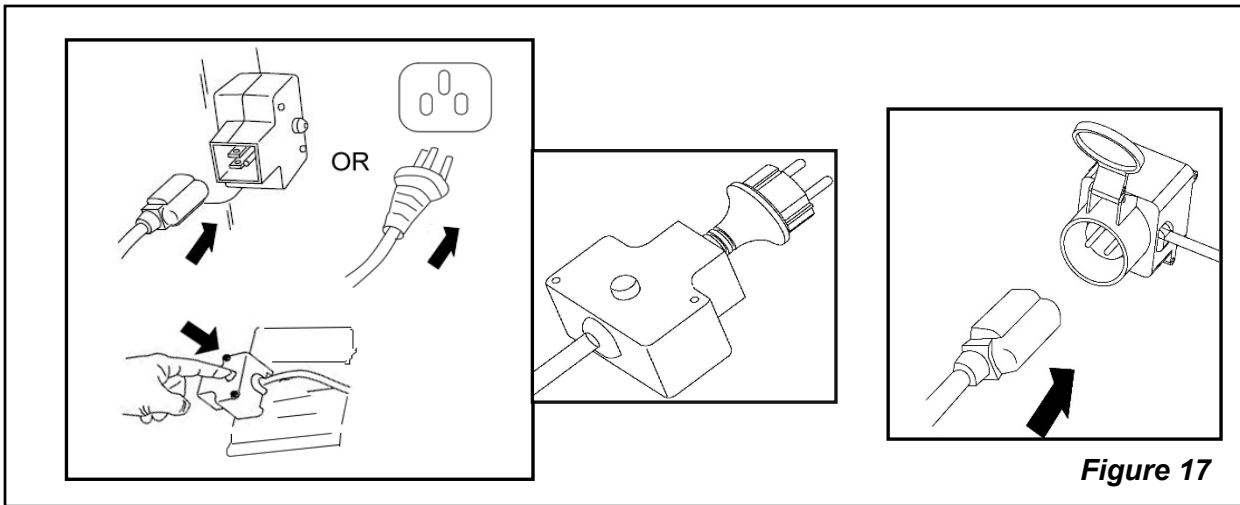
See Figure 16

Pulling the starter grip or using the starter motor operates the recoil starter to crank the engine.



See Figure 17

120 V OR 230 V ELECTRIC START

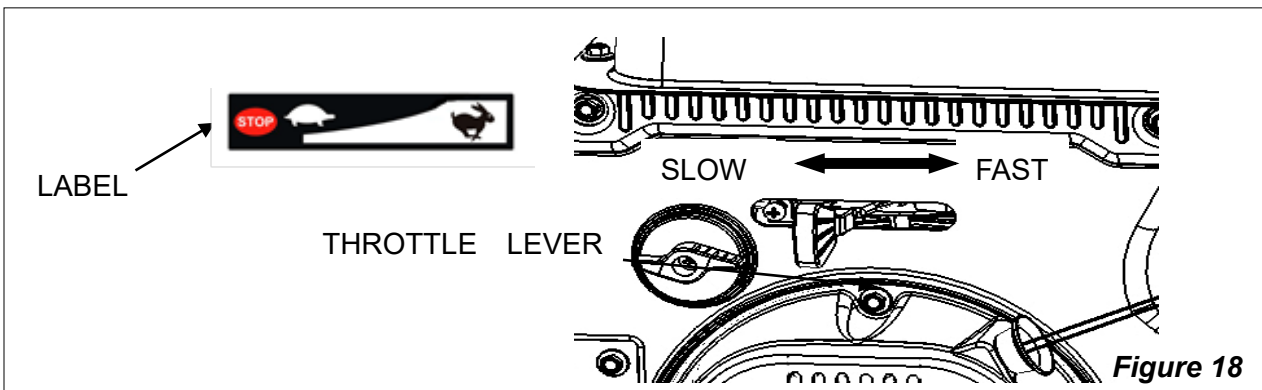


See Figure 18

The throttle lever controls engine THROTTLE LEVER speed.

Moving the throttle lever in the directions shown makes the engine run faster or slower.

NOTE: have a turn off a switch in SLOW position ,In the end of the low speed, the engine will stop.Label add" STOP" Symbol.







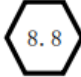

Starting

Before starting the machine, check and adjust the following items:

1. Drive belt tension.
2. Gearbox oil level.
3. All bolts, nuts and screws.

Tightening Torque

Please follow the table below to identify the torque value as required.

Torque Values Chart for Common Bolt Sizes													
Bolt Size (inches)	Bolt Head Identification							Bolt Head Identification					
							Bolt Size (Metric)						
in-tpi ¹	Grade 2		Grade 5		Grade 8			mm x pitch ⁴	Class 5.8		Class 8.8		Class 10.9
	N · m ²	ft-lb ³	N · m	ft-lb	N · m	ft-lb		N · m	ft-lb	N · m	ft-lb	N · m	ft-lb
1/4" - 20	7.4	5.6	11	8	16	12	M 5 X 0.8	4	3	6	5	9	7
1/4" - 28	8.5	6	13	10	18	14	M 6 X 1	7	5	11	8	15	11
5/16" - 18	15	11	24	17	33	25	M 8 X 1.25	17	12	26	19	36	27
5/16" - 24	17	13	26	19	37	27	M 8 X 1	18	13	28	21	39	29
3/8" - 16	27	20	42	31	59	44	M10 X 1.5	33	24	52	39	72	53
3/8" - 24	31	22	47	35	67	49	M10 X 0.75	39	29	61	45	85	62
7/16" - 14	43	32	67	49	95	70	M12 X 1.75	58	42	91	67	125	93
7/16" - 20	49	36	75	55	105	78	M12 X 1.5	60	44	95	70	130	97
1/2" - 13	66	49	105	76	145	105	M12 X 1	90	66	105	77	145	105
1/2" - 20	75	55	115	85	165	120	M14 X 2	92	68	145	105	200	150
9/16" - 12	95	70	150	110	210	155	M14 X 1.5	99	73	155	115	215	160
9/16" - 18	105	79	165	120	235	170	M16 X 2	145	105	225	165	315	230
5/8" - 11	130	97	205	150	285	210	M16 X 1.5	155	115	240	180	335	245
5/8" - 18	150	110	230	170	325	240	M18 X 2.5	195	145	310	230	405	300
3/4" - 10	235	170	360	265	510	375	M18 X 1.5	220	165	350	260	485	355
3/4" - 16	260	190	405	295	570	420	M20 X 2.5	280	205	440	325	610	450
7/8" - 9	225	165	585	430	820	605	M20 X 1.5	310	230	650	480	900	665
7/8" - 14	250	185	640	475	905	670	M24 X 3	480	355	760	560	1050	780
1" - 8	340	250	875	645	1230	910	M24 X 2	525	390	830	610	1150	845
1" - 12	370	275	955	705	1350	995	M30 X 3.5	960	705	1510	1120	2100	1550
1-1/8" - 7	480	355	1080	795	1750	1290	M30 X 2	1060	785	1680	1240	2320	1710
1-1/8" - 12	540	395	1210	890	1960	1440	M36 X 3.5	1730	1270	2650	1950	3660	2700
1-1/4" - 7	680	500	1520	1120	2460	1820	M36 X 2	1880	1380	2960	2190	4100	3220
1-1/4" - 12	750	555	1680	1240	2730	2010	¹ in-tpi = nominal thread diameter in inches-threads per inch ² N · m = newton-meters ³ ft-lb = foot pounds ⁴ mm x pitch = nominal thread diameter in millimeters x thread pitch						
1-3/8" - 6	890	655	1990	1470	3230	2380							
1-3/8" - 12	1010	745	2270	1670	3680	2710							
1-1/2" - 6	1180	870	2640	1950	4290	3160							
1-1/2" - 12	1330	980	2970	2190	4820	3560							

Torque tolerance + 0%, -15% of torquing values. Unless otherwise specified use torque values listed above.
 All locknuts or lubricated fasteners: Use 75% of torque value. (i.e. 1/2"-13 GR5 = 76 ft-lb; 75% of 76 or .75 x 76 = 57 ft-lb)

STORAGE & TRANSPORT

Storage

1. Remove any dirt and grease that may have accumulated on the machine and moving parts. Scrape off compacted dirt from under the hood. Clean the machine inside and out so as to avoid corrosion.
2. Check rotor, blades, blade mounts, and blade bolts for wear and replace if necessary.
3. Don't spray water on the rolling bearing if you clean the machine with high pressure sprayer.
4. Check and clean the universal joint, driving belt press roller, or replace them if they are not in good condition. Lubricate wherever needed.
5. Recoat the parts rubbed and damaged for anti-corrosion.
6. Store the machine in a dry, level area.

Transport

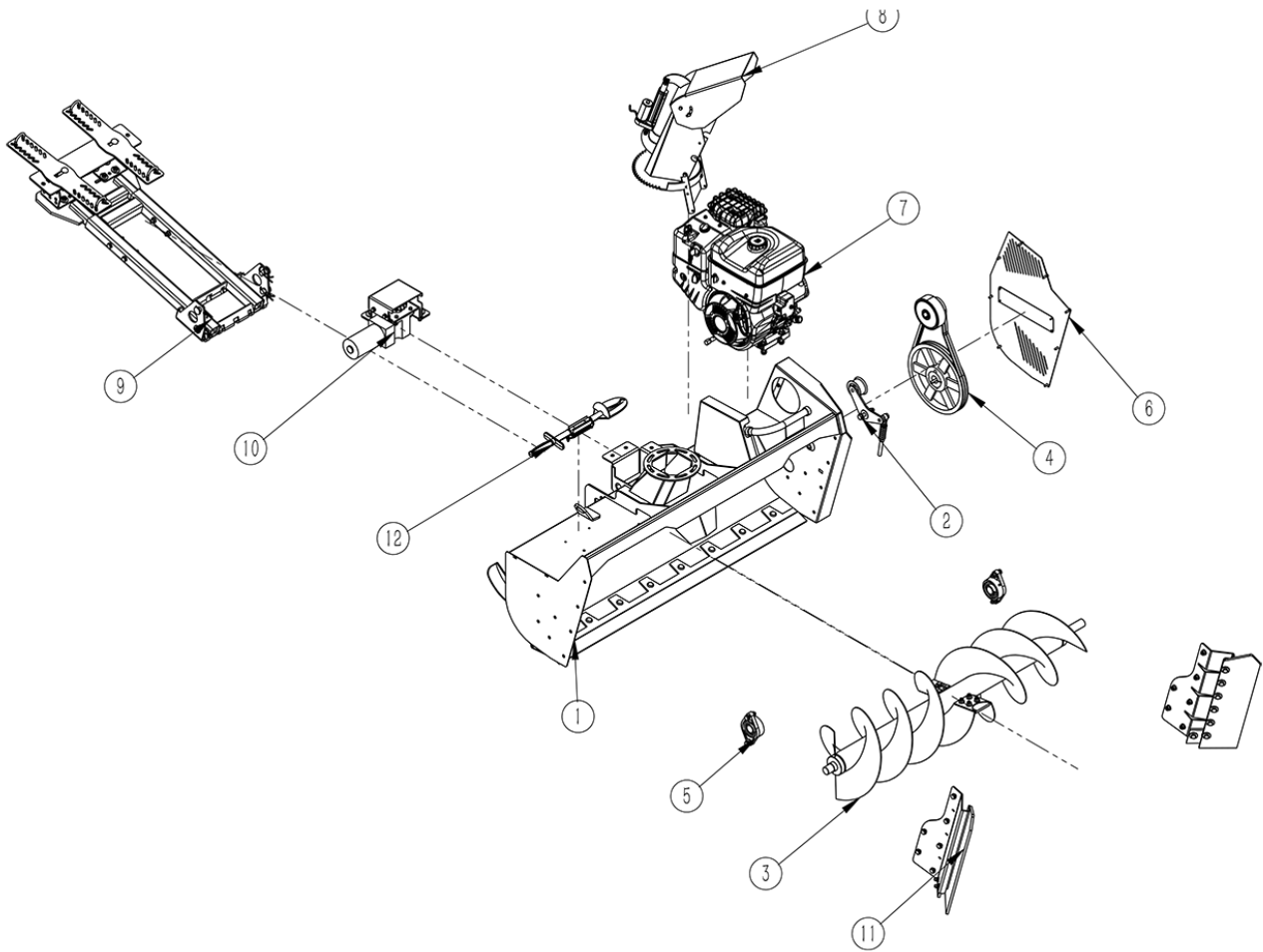
WARNING

- Always disengage power take-off before raising machine to transport position.
- When traveling on roadways, travel in such a way that other vehicles may pass you safely. Always use LED lights, clean reflectors, and a slow moving vehicle sign that is visible from the back to warn operators in other vehicles of your presence.
- Always comply with all federal, state, and local laws.

1. Be sure to reduce tractor ground speed when turning, leaving enough clearance so that the machine does not contact obstacles such as buildings, trees, fences, etc.
2. Select a safe ground travel speed when transporting from one area to another. When traveling on roadways, transport in such a way that faster moving vehicles may pass safely.

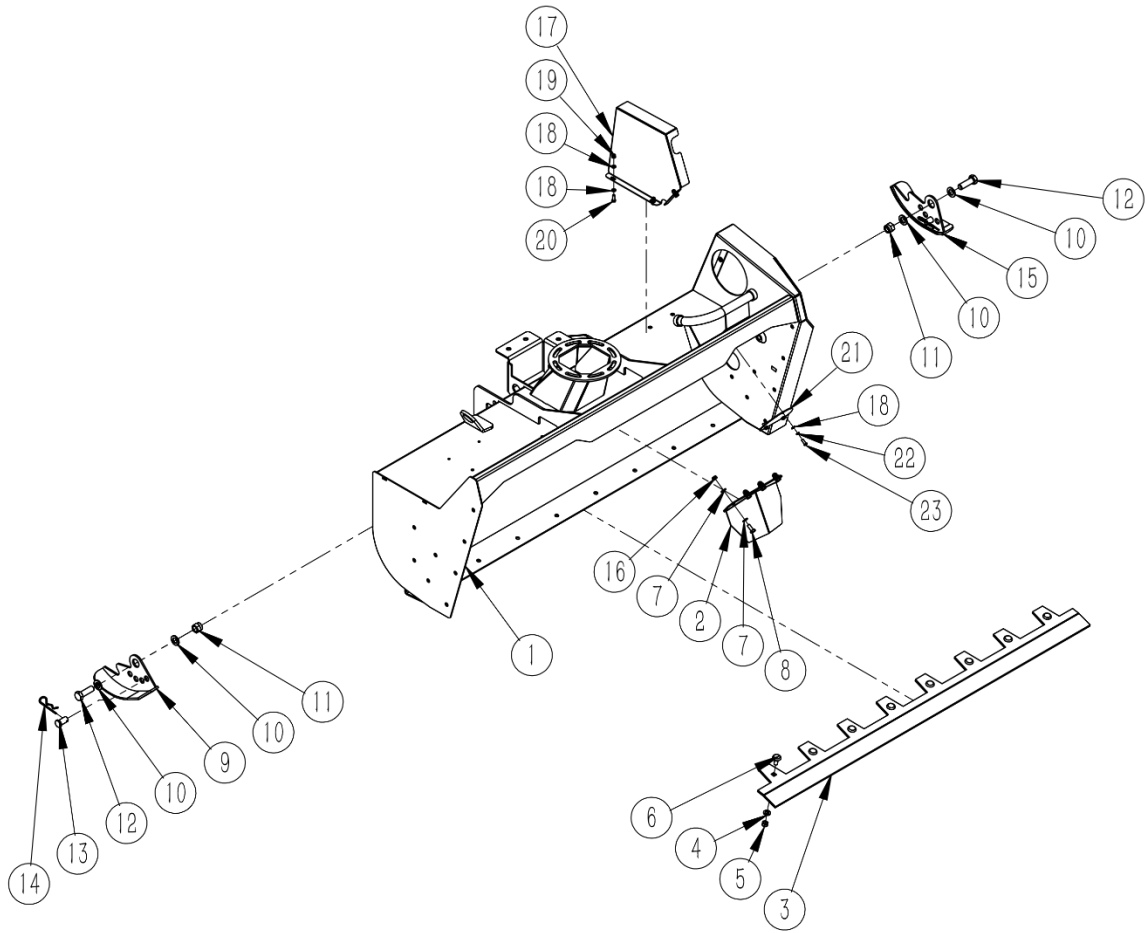
EXPLODED VIEWS & PARTS LIST

TVS130



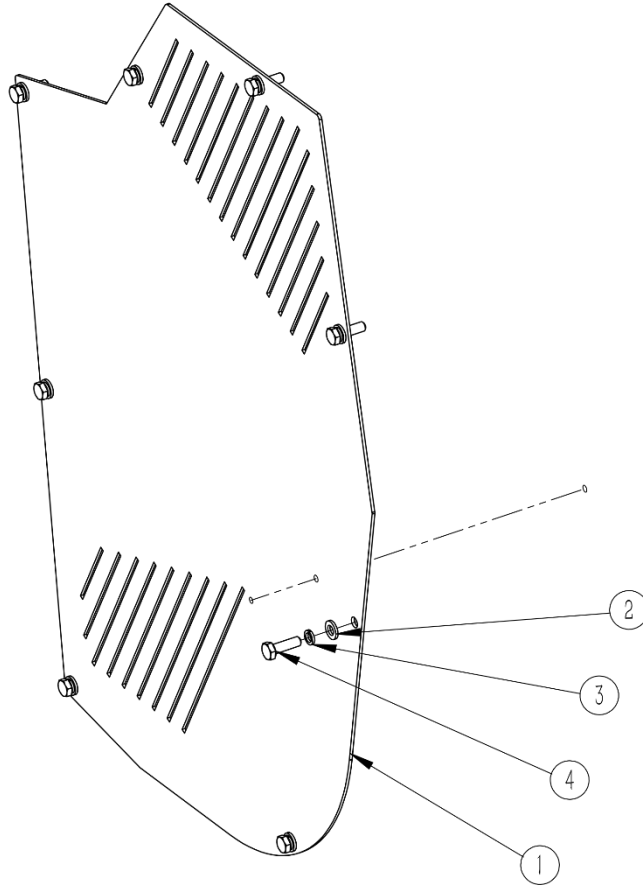
POS.	COD.	Specification	Description	Qty
1	2060205399	R03011A01000-000	Hood assembly	1
2	2060205400	R03011A07000-000	Tensioning board component	1
3	2060205401	R03011A04000-000	Churning components	1
4	2060205397	R03011A05000-000	Drive assembly	1
5	2060205402	R03011A08000-000	Housing Assembly	1
6	2060205403	R03011A02000-000	Housing Assembly	1
7	2060205409	R03011A03000-000	Engine components	1
8	2060205404	R03011A06000-000	Housing Assembly	1
9	2060205405	R03011A10000-000	Fixed bracket assembly	1
10	2060205407	R03011A46000-000	Base as-motor	1
11	2060205408	R03011A09000-000	Arm the snowboard assembly	1
12	2060105420	R03002B09000-000	Snow shovel assembly	1

HOOD ASSEMBLY



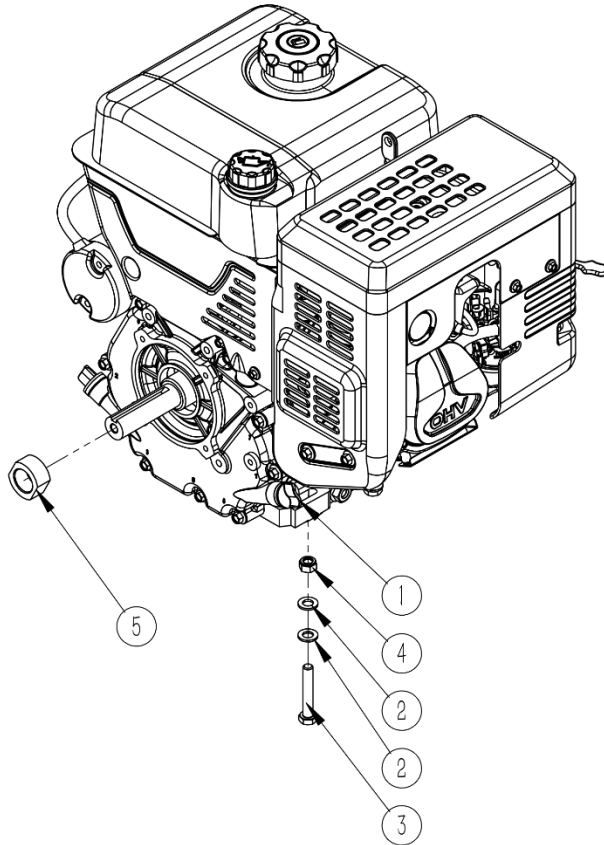
POS.	COD.	Specification	Description	Qty
1	2020007380	R03011A01100-000	Welding parts for hood	1
2	2020007283	R03011A01200-000	Fender Welds	1
3	2000006173	R03011A01000-001	Plate	1
4	3080100006	GB/T95-10-EP•Zn	Plain washer	8
5	3050500004	GB/T889.1-M10-8-EP•Zn	Locknut	8
6	3041700009	GB/T794-M10×25-8.8-EP•Zn	Strengthened cap head square neck bolt	8
7	3080100004	GB/T95-8-EP•Zn	Plain washer	8
8	3040100022	GB/T5783-M8×20-8.8-EP•Zn	Full-thread hexagon bolts	4
9	2020007284	R03011A01300-000	Slide plate welding right	1
10	3080100009	GB/T95-16-EP•Zn	Plain washer	
11	3050500009	GB/T889.1-M16-8-EP•Zn	Locknut	2
12	3040100108	GB/T5783-M16×50-8.8-EP•Zn	Full-thread hexagon bolts	2
13	2000006180	R03011A01000-003	Long Pin shaft	2
14	3120400008	Din11024-4-EP•Zn	R Pin	2
15	2020007285	R03011A01400-000	Slide plate welding pieces left	1
16	3050500003	GB/T889.1-M8-8-EP•Zn	Locknut	4
17	2000006179	R03011A01000-002	Plate	1
18	3080100003	GB/T95-6-EP•Zn	Plain washer	9
19	3050500002	GB/T889.1-M6-8-EP•Zn	Locknut	3
20	3040100006	GB/T5783-M6×18-8.8-EP•Zn	Full-thread hexagon bolts	3
21	2000006196	R03011A01000-004	plate	1
22	3080500006	GB/T93-6-EP•Zn	Spring washer	3
23	3060300006	GB/T70.2-M6×16-8.8-EP•Zn	Hexagon socket button head screws	3

HOUSING ASSEMBLY



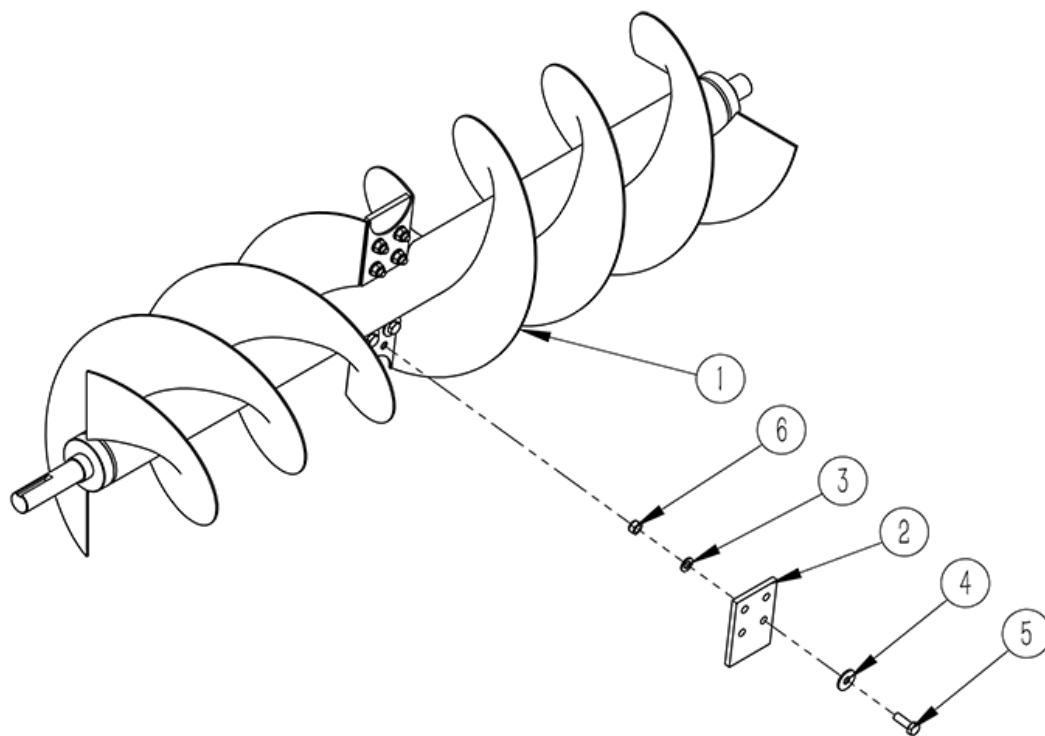
POS.	COD.	Specification	Description	Qty
1	2000006218	R03011B02000-001	Side plate of belt pulley cover	1
2	3080100003	GB/T95-6-EP•Zn	Plain washer	8
3	3080500006	GB/T93-6-EP•Zn	Spring washer	8
4	3040100007	GB/T5783-M6×20-8.8-EP•Zn	Full-thread hexagon bolts	8

ENGINE COMPONENTS



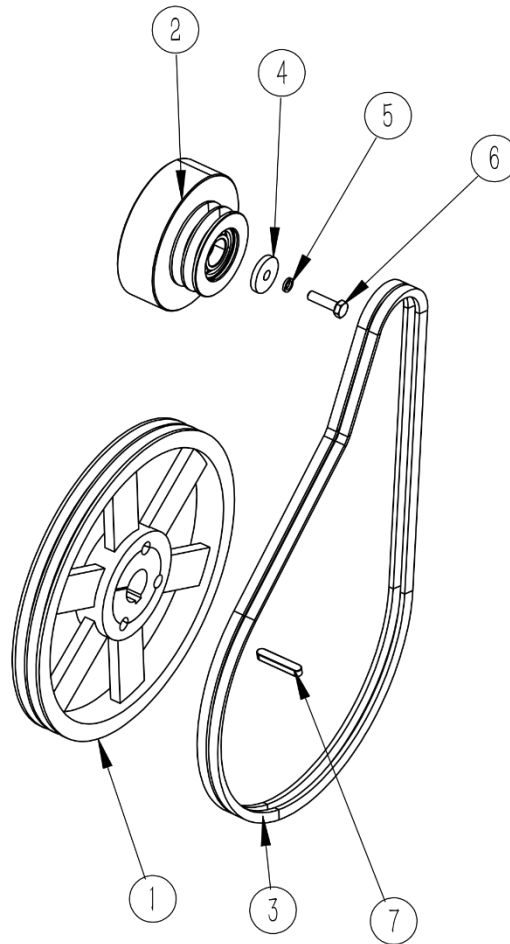
POS.	COD.	Specification	Description	Qty
1	3200100626	LC190F(D)S-13-1-16	Engine	1
2	3080100006	GB/T95-10-EP•Zn	Plain washer	8
3	3040100051	GB/T5783-M10×60-8.8-EP•Zn	Full-thread hexagon bolts	4
4	3050500004	GB/T889.1-M10-8-EP•Zn	Locknut	4
5	2010005800	R03011A05000-003	Clutch washer	1

CHURNING COMPONENTS



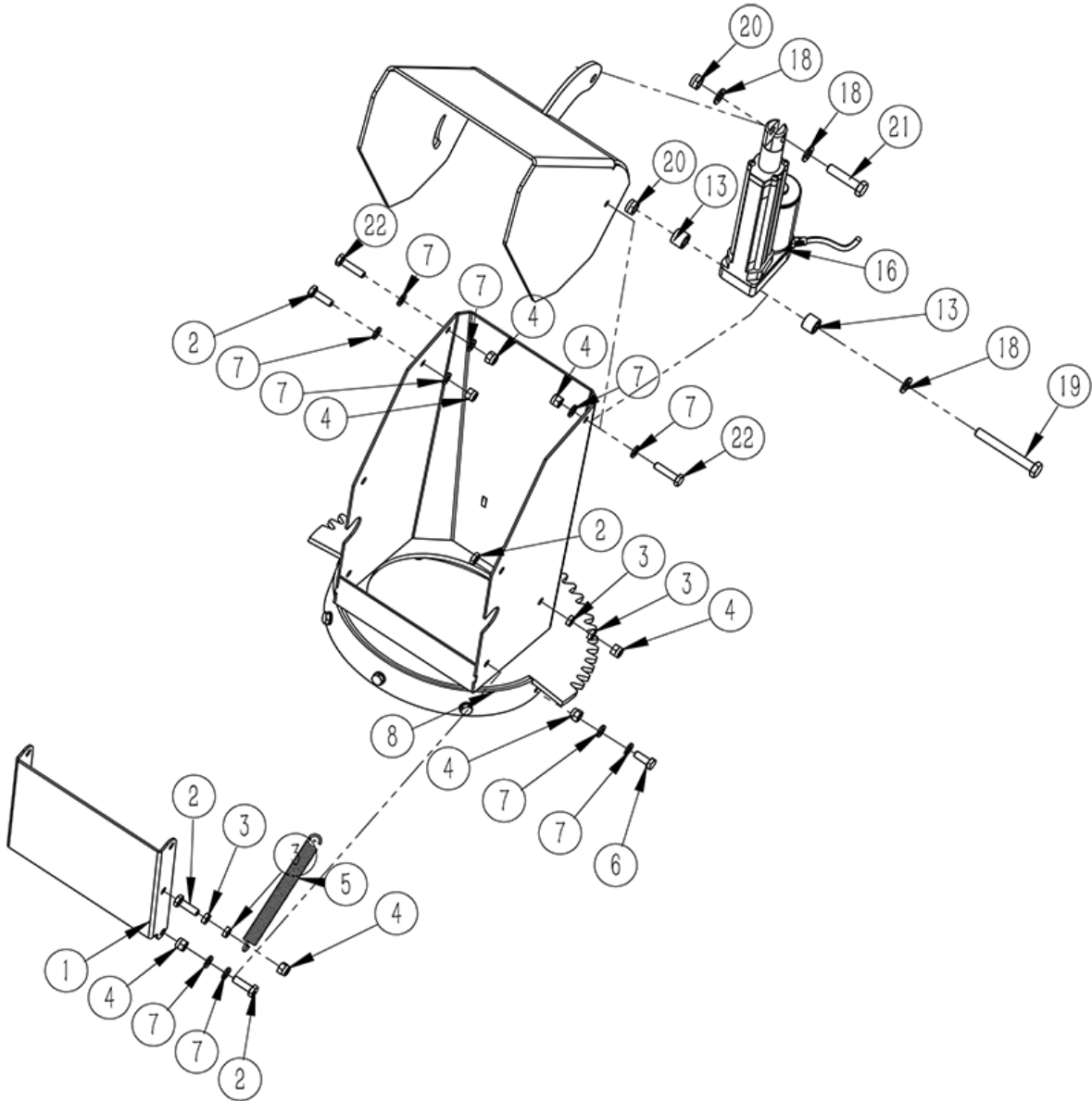
POS.	COD.	Specification	Description	Qty
1	2020007288	R03011A04100-000	Stir welding parts	1
2	3210600661	R03011A04000-001	Rubber plate	2
3	3080100006	GB/T95-10-EP•Zn	Plain washer	8
4	3080200009	GB/T96.2-10-EP•Zn	Large plain washer	8
5	3040100045	GB/T5783-M10×30-8.8-EP•Zn	Full-thread hexagon bolts	8
6	3050500004	GB/T889.1-M10-8-EP•Zn	Locknut	8

DRIVE ASSEMBLY



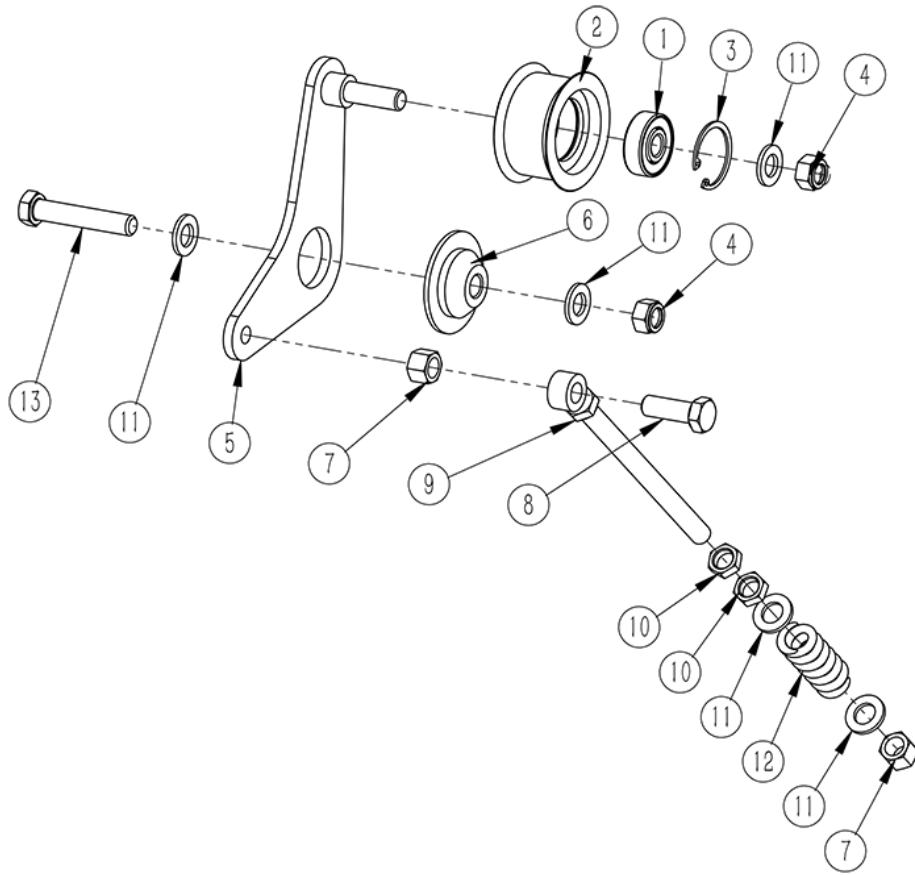
POS.	COD.	Specification	Description	Qty
1	3160400671	SPZ280-2-2012-30-HT250-O	Pulley	1
2	3161000611	98-125-φ25	centrifugal clutch	1
3	3160300687	GATES-XPZ1222	belt	2
4	2000006250	R03011B5000-001	Engine shaft end cover	1
5	3080500007	GB/T93-8-EP•Zn	Spring washer	1
6	3040100025	GB/T5783-M8×30-8.8-EP•Zn	Full-thread hexagon bolts	1
7	3090100603	GB/T1096-A8×7×45	Square and rectangular keys	1

HOUSING ASSEMBLY



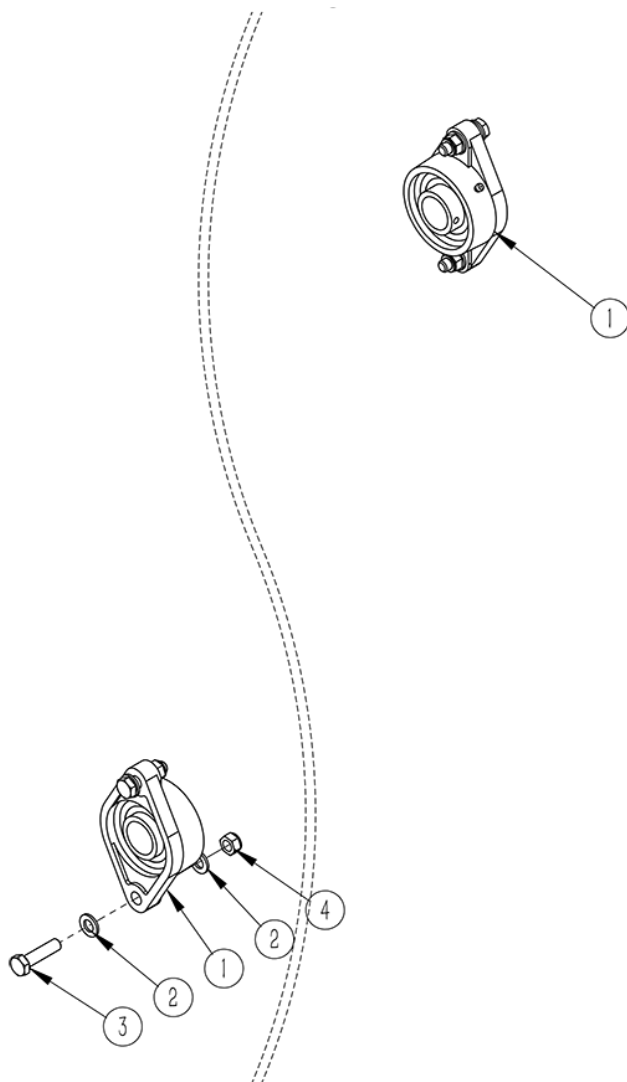
POS.	COD.	Specification	Description	Qty
1	2000006184	R03011A06000-001	Blowing Snow mouth cover	1
2	3040100007	GB/T5783-M6×20-8.8-EP•Zn	Full-thread hexagon bolts	5
3	3050300001	GB/T6172.1-M6-04-EP•Zn	Hexagon thin nut	4
4	3050500002	GB/T889.1-M6-8-EP•Zn	Locknut	15
5	3110100623	L I -2×13×130×54-R-65Mn-EP•Zn	Spring	1
6	3040100608	GB/T5783-M6×16-A4-80-N	Full-thread hexagon bolts	8
7	3080100003	GB/T95-6-EP•Zn	Plain washer	26
8	2020007290	R03011A06100-000	Snow blowing mouth welding piece	1
9	2000006183	R03011A06000-002		2
10	2020007291	R03011A06200-000	Snow blowing mouth welding piece	1
11	3190500602	Y8060-22120887	HB-DJ806	1
12	3080100004	GB/T95-8-EP•Zn	Plain washer	4
13	3040100031	GB/T5783-M8×65-8.8-EP•Zn	Full-thread hexagon bolts	1
14	3050500003	GB/T889.1-M8-8-EP•Zn	Locknut	2
15	3040100026	GB/T5783-M8×35-8.8-EP•Zn	Full-thread hexagon bolts	1
16	3040100008	GB/T5783-M6×25-8.8-EP•Zn	Full-thread hexagon bolts	2

TENSIONING BOARD COMPONENT



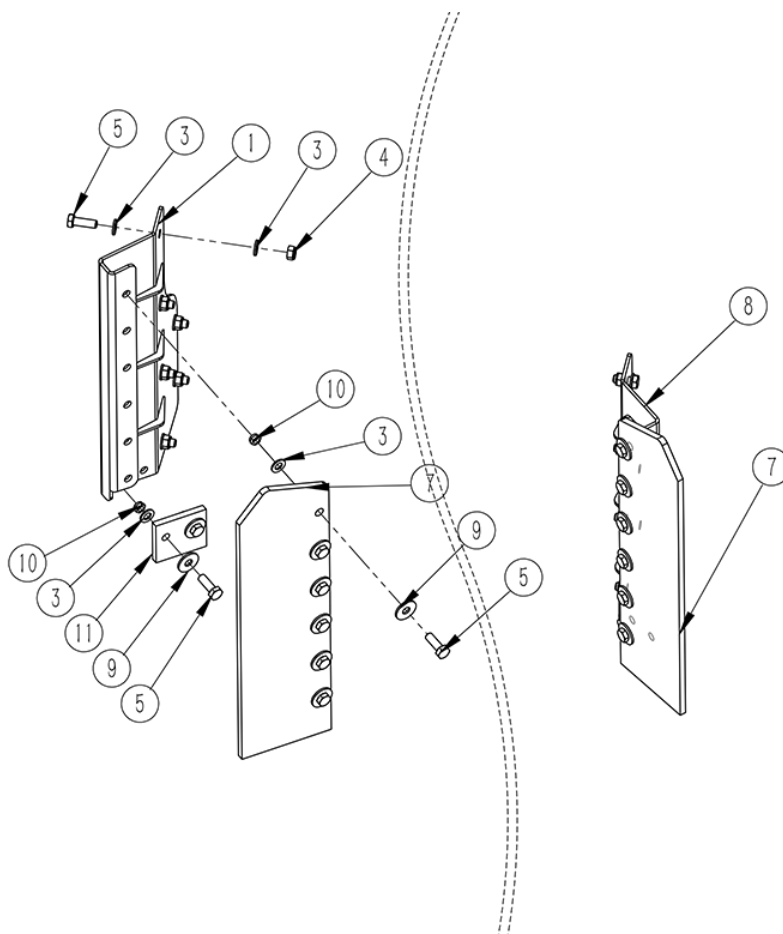
POS.	COD.	Specification	Description	Qty
1	3100100646	GB / T276-94-6301-2RZ	bearing	1
2	2010005768	R03011A07000-002	Tensioning round	1
3	3080600025	GB/T893-37-A	Retaining rings for borP	1
4	3050500007	GB/T889.1-M12-8-EP•Zn	Locknut	2
5	2020007287	R03011A07100-000	Tensioning plate welding parts	1
6	2010005774	R03011A07000-003	Cover	1
7	3050100007	GB/T41-M12-5-EP•Zn	Hexagon Nuts	2
8	3040100069	GB/T5783-M12×35-8.8-EP•Zn	Full-thread hexagon bolts	1
9	2020006238	F01001B10200-000	Adjusting screw wdlding	1
10	3050300004	GB/T6172.1-M12-04-EP•Zn	Hexagon thin nut	2
11	3080100007	GB/T95-12-EP•Zn	Plain washer	5
12	3110200020	Y I -5×23×9×55×6-R-65Mn-EP•Zn	Pressure spring	1
13	3040100076	GB/T5783-M12×65-8.8-EP•Zn	Full-thread hexagon bolts	1

HOUSING ASSEMBLY



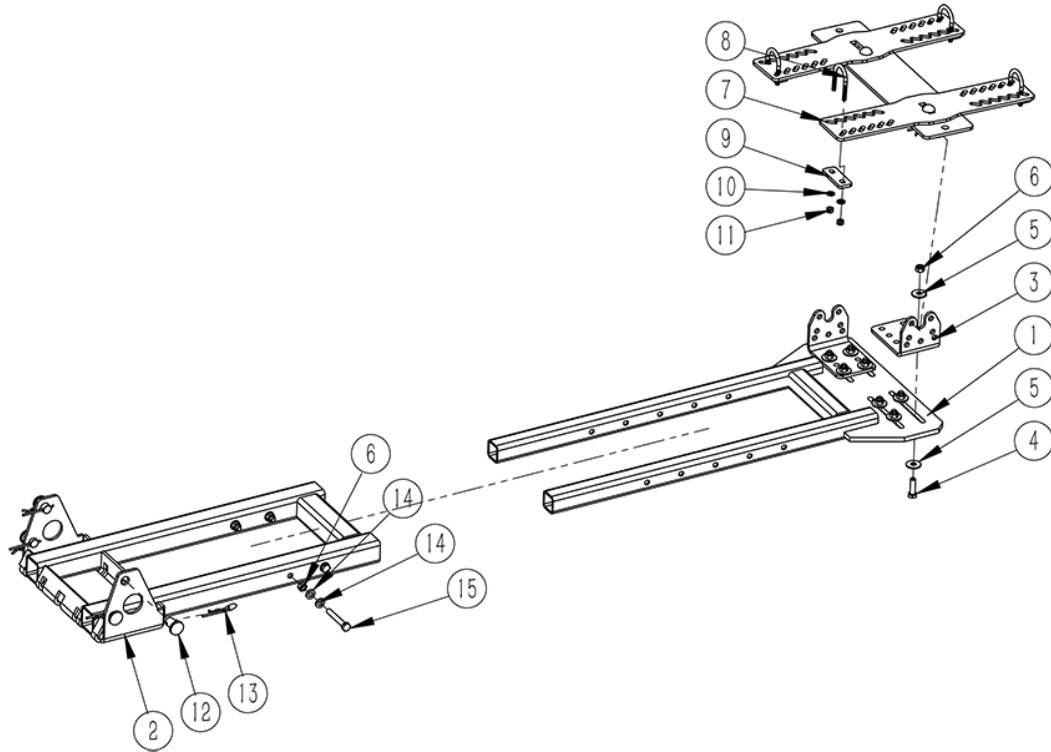
POS.	COD.	Specification	Description	Qty
1	3100700623	GB/T7810-UCFLU206	Outer Spherical Ball Bearing with Seat	2
2	3080100006	GB/T95-10-EP•Zn	Plain washer	8
3	3040100047	GB/T5783-M10×40-8.8-EP•Zn	Full-thread hexagon bolts	4
4	3050500004	GB/T889.1-M10-8-EP•Zn	Locknut	4

ARM THE SNOWBOARD ASSEMBLY



POS.	COD.	Specification	Description	Qty
1	2020007298	R03011A09100-000	Left arm snowboard assembly	1
2	3080100006	GB/T95-10-EP•Zn	Plain washer	40
3	3050500004	GB/T889.1-M10-8-EP•Zn	Locknut	12
4	3040100045	GB/T5783-M10×30-8.8-EP•Zn	Full-thread hexagon bolts	22
5	3040100043	GB/T5783-M10×25-8.8-EP•Zn	Full-thread hexagon bolts	6
6	3210600663	R03011A09000-003	Rubber Sheet	2
7	2020007297	R03011A09200-000	Right arm snowboard assembly	1
8	3080200009	GB/T96.2-10-EP•Zn	Large plain washer	16
9	3050500003	GB/T889.1-M8-8-EP•Zn	Locknut	16
10	3210600662	R03011A09000-004	Rubber Sheet	2

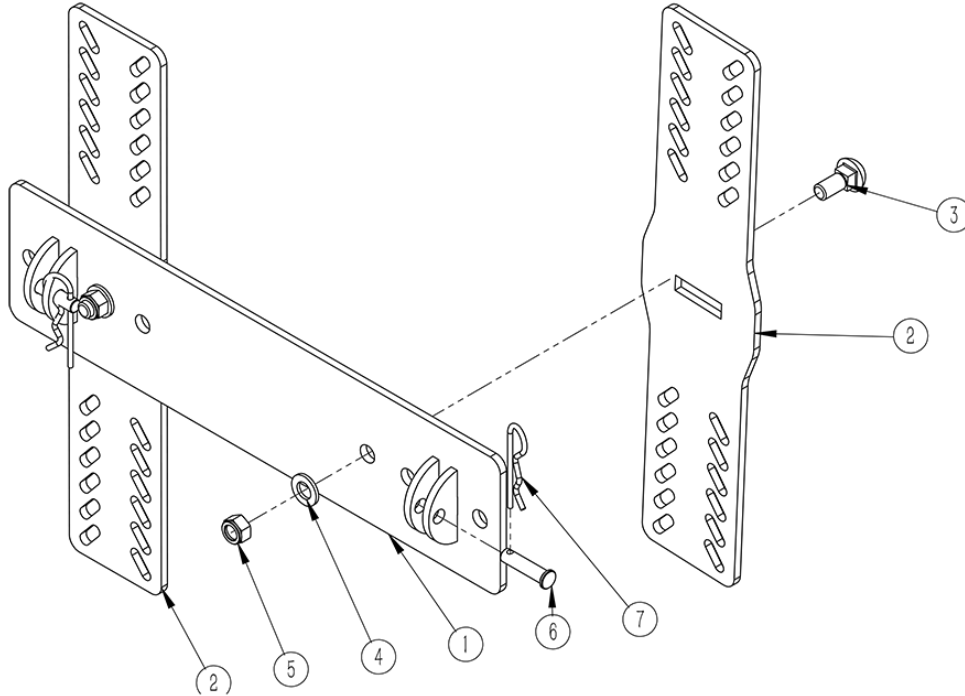
FIXED BRACKET ASSEMBLY



POS.	COD.	Specification	Description	Qty
1	2020007293	R03011A11000-000	Fixed bracket welding piece	1
2	2020007294	R03011A12000-000	Fixed bracket welding piece	1
3	2000006185	R03011A10000-001	Fixed bracket plate	2
4	3040100046	GB/T5783-M10×35-8.8-EP•Zn	Full-thread hexagon bolts	8
5	3080200009	GB/T96.2-10-EP•Zn	Large plain washer	16
6	3050500004	GB/T889.1-M10-8-EP•Zn	Locknut	12
7	2060304859	R03011A13000-000	Regulator Board Assembly	1
8	3041200602	M8x38x70	U-bolt	4
9	2000006186	R03011A10000-002	plate	4

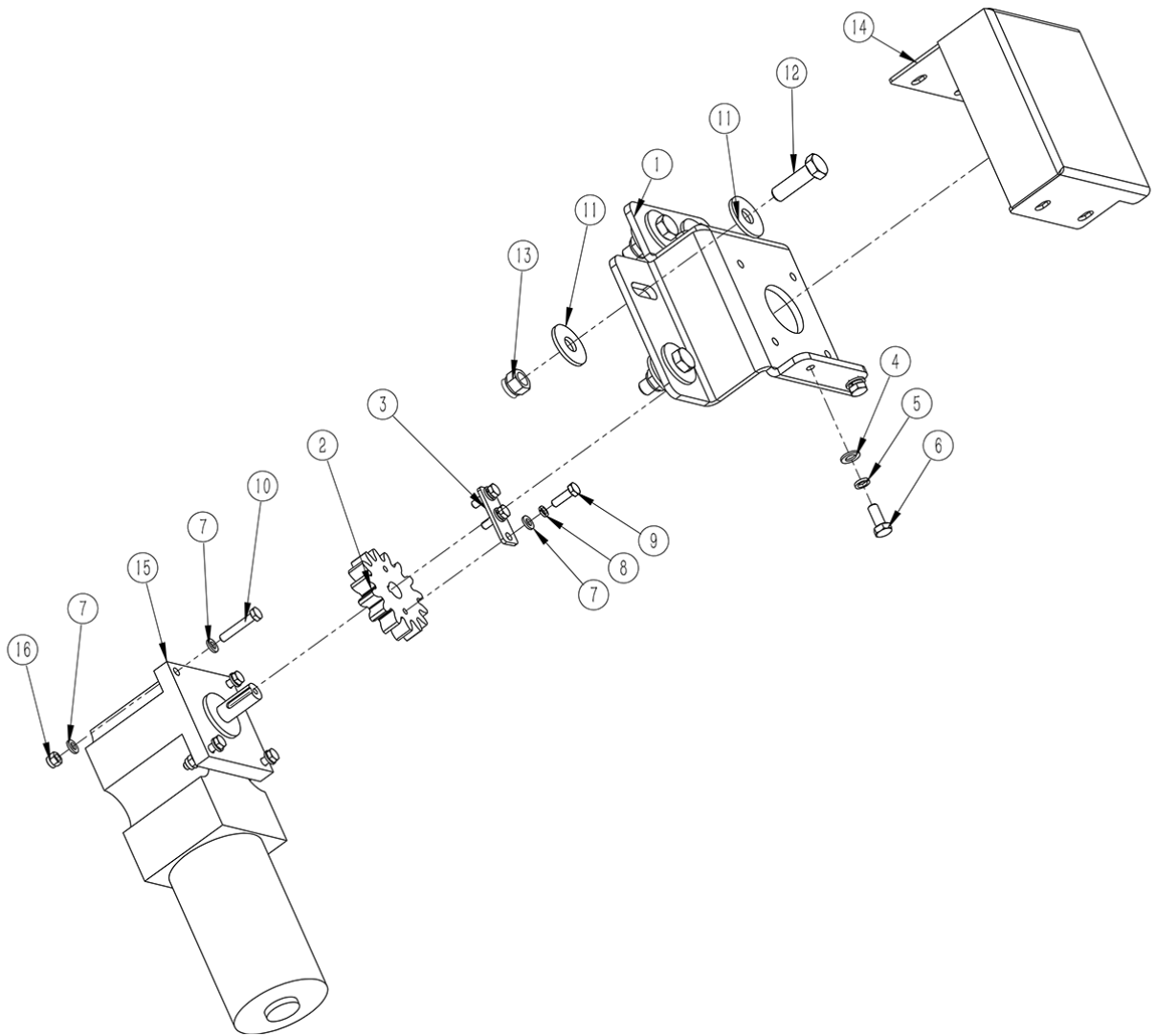
10	3080100004	GB/T95-8-EP•Zn	Plain washer	8
11	3050500611	GB/T889.1-M8-10-EP•Zn	Locknut	8
12	2010005769	R03011A10000-003	Long Pin shaft	4
13	3120400008	Din11024-4-EP•Zn	R Pin	4
14	3080100006	GB/T95-10-EP•Zn	Plain washer	8
15	3040100053	GB/T5783-M10×70-8.8-EP•Zn	Full-thread hexagon bolts	4

REGULATOR BOARD ASSEMBLY



POS.	COD.	Specification	Description	Qty
1	2020007296	R03011A13100-000	Welding parts of adjusting plate	1
2	2000006187	R03011A13000-001	Plate	2
3	3040800005	GB/T12-M12×30-4.8-EP•Zn	Cup head square neck bolts M12×30	2
4	3080100007	GB/T95-12-EP•Zn	Plain washer	2
5	3050500007	GB/T889.1-M12-8-EP•Zn	Locknut	2
6	2010005771	R03011A13000-002	Pin	2
7	3120400008	Din11024-4-EP•Zn	R Pin	2

BASE AS-MOTOR



POS.	COD.	Specification	Description	Qty
1	200006189	R03011A46000-002	Plate	1
2	3160600002	R03002A21100-004	Gear	1
3	2000000481	R03002A21100-002	Electric pinion press plate	1
4	3080100004	GB/T95-8-EP•Zn	Plain washer	4
5	3080500007	GB/T93-8-EP•Zn	Spring washer	4
6	3040100022	GB/T5783-M8×20-8.8-EP•Zn	Full-thread hexagon bolts	4
7	3080100003	GB/T95-6-EP•Zn	Plain washer	11
8	3080500006	GB/T93-6-EP•Zn	Spring washer	3
9	3040100007	GB/T5783-M6×20-8.8-EP•Zn	Full-thread hexagon bolts	3
10	3040100010	GB/T5783-M6×35-8.8-EP•Zn	Full-thread hexagon bolts	4
11	3080200010	GB/T96.2-12-EP•Zn	Large plain washer	8
12	3040100071	GB/T5783-M12×40-8.8-EP•Zn	Full-thread hexagon bolts	4
13	3050500007	GB/T889.1-M12-8-EP•Zn	Locknut	4
14	200006188	R03011A46000-001	Protective cover	1
15	3190500604	BP-403	Electric Drive	1
16	3050500002	GB/T889.1-M6-8-EP•Zn	Locknut	4

WARRANTY

The Manufacturer warrants to the original purchaser that this product will be free from defects in material and workmanship beginning on the date of purchase by the end user according to the following schedule when used as intended and under normal service and conditions for personal use.

Overall Unit and Driveline: 18 months Parts and Labor

Blades and Belts: Considered wearable

This Warranty is limited to the replacement of any defective part by the Manufacturer and the installation by the dealer of any such replacement part, and does not cover common wear items. The Manufacturer reserves the right to inspect any equipment or parts which are claimed to have been defective in material or workmanship.

This Warranty does not apply to any part or product which in Manufacturer's judgment shall have been misused or damaged by accident or lack of normal maintenance or care, or which has been repaired or altered in a way which adversely affects its performance or reliability, or which has been used for a purpose for which the product is not designed. Misuse also specifically includes failure to properly maintain oil levels, grease points, and driveline shafts.

Claims under this Warranty should be made to the dealer which originally sold the product and all warranty adjustments must be made through an authorized Manufacturer dealer. The Manufacturer reserves the right to make changes in materials or design of the product at any time without notice.

This Warranty shall not be interpreted to render Manufacturer liable for damages of any kind, direct, consequential, or contingent to property. Furthermore, the Manufacturer shall not be liable for damages resulting from any cause beyond its reasonable control. This Warranty does not extend to loss of crops, any expense or loss for labor, supplies, rental machinery or for any other reason.

No other warranty of any kind whatsoever, express or implied, is made with respect to this sale; and all implied warranties of merchantability and fitness for a particular purpose which exceed the obligations set forth in this written warranty are hereby disclaimed and excluded from this sale.