

Hydraulic Sweeper Usermanual

Model: HNSWF150b



Always read the manual before use

DK·TEC

CONTENTS

CONTENTS	1
PRODUCT SPECIFICATIONS	2
SAFETY INSTRUCTIONS	3
OPERATION	7
MAINTENANCE	9
PARTS LIST.	10
HANMEY IMPLEMENT WARRANTY	14

SAFETY INSTRUCTIONS



Before operating the Implement read the following safety instructions. Failure to comply with these warnings may result in serious injury or death.

1.1 Safety First

YOU are responsible for the SAFE operation and maintenance of your Implement. YOU must ensure that you and anyone else who is going to operate, maintain or work around the Implement is familiar with the operating and maintenance procedures and related SAFETY information contained in this manual. This manual will take you step-by-step through your working day and alert you to all good safety practices that should be adhered to while operating the Implement.

Remember, YOU are the key to safety. Good safety practices not only protect you but also the people around you. Make these practices a working part of your safety program. Be certain that EVERYONE operating this equipment is familiar with the recommended operating and maintenance procedures and follows all the safety precautions. Most accidents can be prevented. Do not risk injury or death by ignoring good safety practices.

1. Implement owners must give operating instructions to operators or employees before allowing them to operate the machine.
2. The most important safety feature on this equipment is a SAFE operator. It is the operator's responsibility to read and understand ALL Safety and Operating instructions in the manual and to follow these. All accidents can be avoided.
3. A person who has not read and understood all operating and safety instructions is not qualified to operate the machine. An untrained operator jeopardise himself and bystanders to possible serious injury or death.
4. Do not modify the equipment in any way. Unauthorized modification may weaken the function and/or safety and could affect the life of the equipment.
5. Think SAFETY! Work SAFELY!

1.2 General Safety

This information is to assist you in preparing, operating and maintaining your implement. Please read and understand the information completely before operating your Implement, paying special attention to all the safety details. Keep this manual handy for a ready reference.

- Hanmey Implements are designed and manufactured only for the intended purpose. Do not modify this equipment in any way. Under no circumstances should they be used for any other purpose.
- Before using the Implement, read and ensure you understand the contents of this Safety and Operator's Manual for the associated implement. Note all the safety instructions.
- Never allow an improperly trained person, children or anyone who is not familiar with the safety rules and operating instructions to attach or operate the implement.
- Before operating the implement, check all pins, bolts and connections to be sure they are securely in place. Replace any damaged or worn parts immediately.

SAFETY INSTRUCTIONS

- Do not allow unrestrained long hair, loose clothing, or jewelry to be around moving parts.
- Operate only in daylight or good artificial light.
- Wear ear protection when operating the implement.
- Watch overhead clearance and beware of underground pipes and cables.
- Ensure the three point linkage lifting capacity of the tractor matches the requirements of the implement, refer to the tractor operators manual for safe working loads, including any counter-weighting that may be required to balance the weight of the implement.
- Do not operate the implement without all the tractor and implement safety shields in place.
- Use a tractor equipped with a Roll Over Protective Structure (ROPS). Always wear your seat belt. Serious injury or even death could result from falling off the tractor particularly during a turnover when the operator could be pinned under the ROPS of the tractor.
- Never operate the tractor and implement until you have read and completely understand the Safety and Operator's Manual, and each of the Safety Decals attached to the tractor and implement.
- Before operating the implement inspect the area to be traversed to ensure that you are familiar with the ground conditions and in particular any obstacles that may be partially hidden.
- Keep all people and animals at a safe distance from the tractor and implement and any moving parts.
- Use caution when changing direction on hills. Avoid high speed, steep slopes, sharp turns, sudden breaking and rough terrain.
- Before dismounting from the tractor, or allowing any person to approach the implement, switch off the engine, apply the parking brake and ensure the implement has stopped moving.
- Never allow any person to ride on the implement when the machine is operating.
- Never work under an implement unless it is supported by a safety stand.
- Always operate the implement from the tractor seat.
- Never clear grass or earth away from the implement while it is operating.
- **Ensure the tractor engine is switched off and the parking brake is applied before performing any inspection or maintenance on the implement.**
- Never use alcoholic beverages or drugs which can hinder alertness or coordination while operating this equipment. Consult your doctor about operating this machine while taking prescription medications.
- Review the safety instructions with all users annually.
- Ensure maintenance is carried out regularly by a qualified person. Pay particular attention to the safety guards, safety decals and attachment points.

1.3 Storage Safety

1. Store the machine in an area away from human activity.
2. Do not permit children to play on or around the stored machine.
3. Store the machine in a dry, level area.
4. Clean grease and oil as required and protect it from the elements

SAFETY INSTRUCTIONS

1.4 Maintenance Safety

1. Good maintenance is your responsibility. Poor maintenance is an invitation to trouble.
2. Follow good shop practices.
3. Keep service area clean and dry.
4. Be sure electrical outlets and tools are properly grounded.
5. Use adequate light for the job at hand.
6. Make sure there is plenty of ventilation. Never operate the engine in a closed building. The exhaust fumes may cause asphyxiation.
7. Before working on this machine, shut off the engine, set the brakes, and remove the ignition key.
8. Never work under equipment unless it is secured by a mechanical stand.
9. Use personal protection devices such as eye, hand and hearing protectors, when performing any service or maintenance work. Use heavy gloves when handling blades.
10. Only use genuine parts for service and maintenance.
11. A fire extinguisher and first aid kit should be kept readily accessible while performing maintenance on this equipment.
12. Periodically tighten all bolts, nuts and screws and check that all pins are properly installed to ensure unit is in a safe condition.
13. When completing a maintenance or service function, make sure all safety shields and devices are installed before placing machine in service.



DO NOT CLIMB ON
IMPLEMENT



CARE YOUR HAND

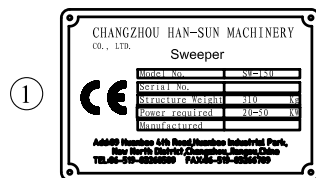


KEEP ALL PEOPLE
AT A SAFE DISTANCE
FROM TRACTOR AND
IMPLEMENT AND
ANY MOVING PARTS.

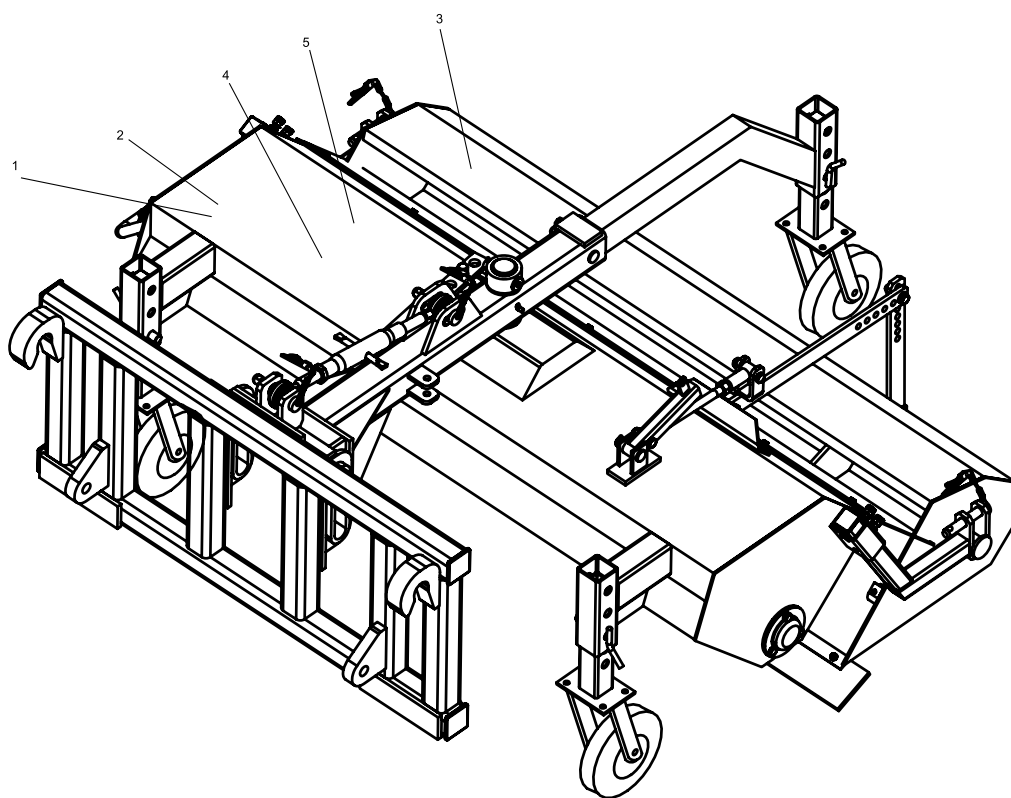
SAFETY INSTRUCTIONS

1.5 SAFETY DECAL

The position of safety decals are shown in the illustrations below. Good safety requires that you familiarize yourself with the various safety signs, and increase your **SAFETY AWARENESS**.



model SW-150



OPERATION

2.1 INSTALLATION

All these implements are designed to attach to the 3 point hitch of small agricultural tractors.

- Please refer Sweeper Assemble Draft and Parts Chart to install sweeper, steps as following:
 - 1. Put whisk brooms on square shaft,
 - 2. Put bearing assemble on the square shaft with bolt .lock the bearing on the deck.
 - 3. Assemble the square shaft with key to the hyd motor. Put motor fixing plate between themotor and deck.
 - 4. Fix the hyd moter on the deck with bolts and spring washers and nuts.
 - 5. Assemble moter protect bar on the deck with bolts, spring washers and washers.
 - 6. Assemble two front wheels.
 - 7. Assemble the dust bucket with bolt, washer and nut.
 - 8. Fix dust guard on the deck assembly with washer, nut and bolt.
 - 9. Put arm on the deck and locked with spilt pin.
 - 10. Assemble rear wheel. locked with spilt pin.
 - 11. Assemble the front frame lock with float pin, lock with bolt.
 - 12. Assemble the adjust linkage and swing bar.
- Points for Attention:
 - 1. Please assemble the couplings to the tractor in correct.
 - 2. Please tighten the fasteners again after 1-2 shifts working

2.2 OPERATION

The sweeper is assembled by manufacturer or our distributor. Must accord the manual.

The sweeper is parked on a horizontal, solid ground with the dust bucket empty.

Use the three point linkage position connect to tractor with the dust bucket empty..

Use couplings connect the tractor's couplings,

COUPLINGS MUST CORRECTLY LOCK ON THE TRACTOR'S COUPLINGS

Use the wheel control the sweeping height.

Use the dust guard to prevent dust.

Use the adjust linkage to adust the sweeping angle.

The loading dust often be emptying .

Check the guard of the motor in good condition.

Should keep the sweeper bottom below the ground no less than 1 inches when working.

Don't remove the grid in the hopper, avoid the blockages occurring.

Follow advice concerning manual handling of heavy.

Do not directly lift the sweeper with the full loading without linking to tractor.



Do not press down the sweeper on the ground. Damage to sweeper will occur. Always raise when transporting and tow implement when sweeping .lower after no working .

OPERATION

2.3 STOPPING

- Lower the implement (for sweeper raise it from the ground first).
- Stop the tractor engine and apply the parking brake.
- Ensure that the implement is either on the ground or well supported when not in use.

MAINTENANCE

3.1 MAINTENANCE

Always follow the safety steps described in this manual, when doing any type of maintenance on this implement, Service should be carried out by qualified personnel. Use authorised genuine parts only for replacement. The implement must be properly supported under its body on all 3 point linkage machines.

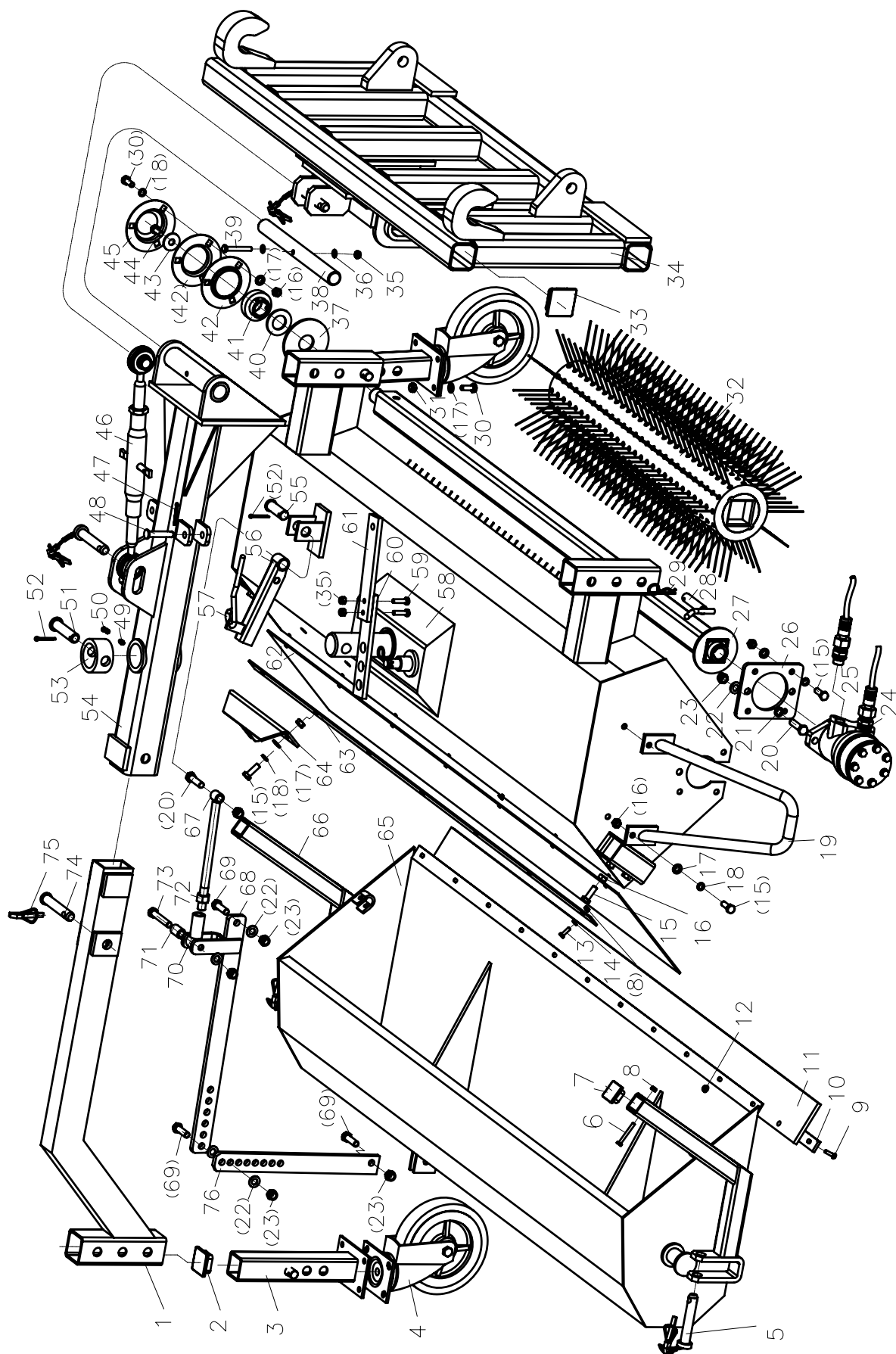
3.2 AFTER EACH USE

-
- Remove large debris such as clumps of dirt, grass, etc. from implement.
- Inspect machine and replace worn or damaged parts
- Replace any safety decals that are missing or not readable.
- Periodically tighten all bolts nuts and screws and check that all R-clips and lynch pins are properly installed to ensure implement is in safe working order.
- use safety stands if implement is required to be raised during maintenance.
-

3.3 BEFORE EXTENDED STORAGE

-
- Follow cleaning procedures from previous page.
- Wash implement using low-pressure water spray.
- Be careful when spraying near scratched or torn safety decals or near edges of decals as water spray can peel decals off surface. Spraying near chipped or scratched paint can also cause paint to peel more.
- Inspect machine for worn or damaged parts, replace any missing safety stickers.
- Sand down scratches and edges where paint is missing and repaint to prevent rust.
- Store the unit in a shed or under tarpaulin to protect from the weather. The blade or shank should be resting on boards or some other object, keep out of soil when storing.
- Store in clean, dry place away from human activity or livestock

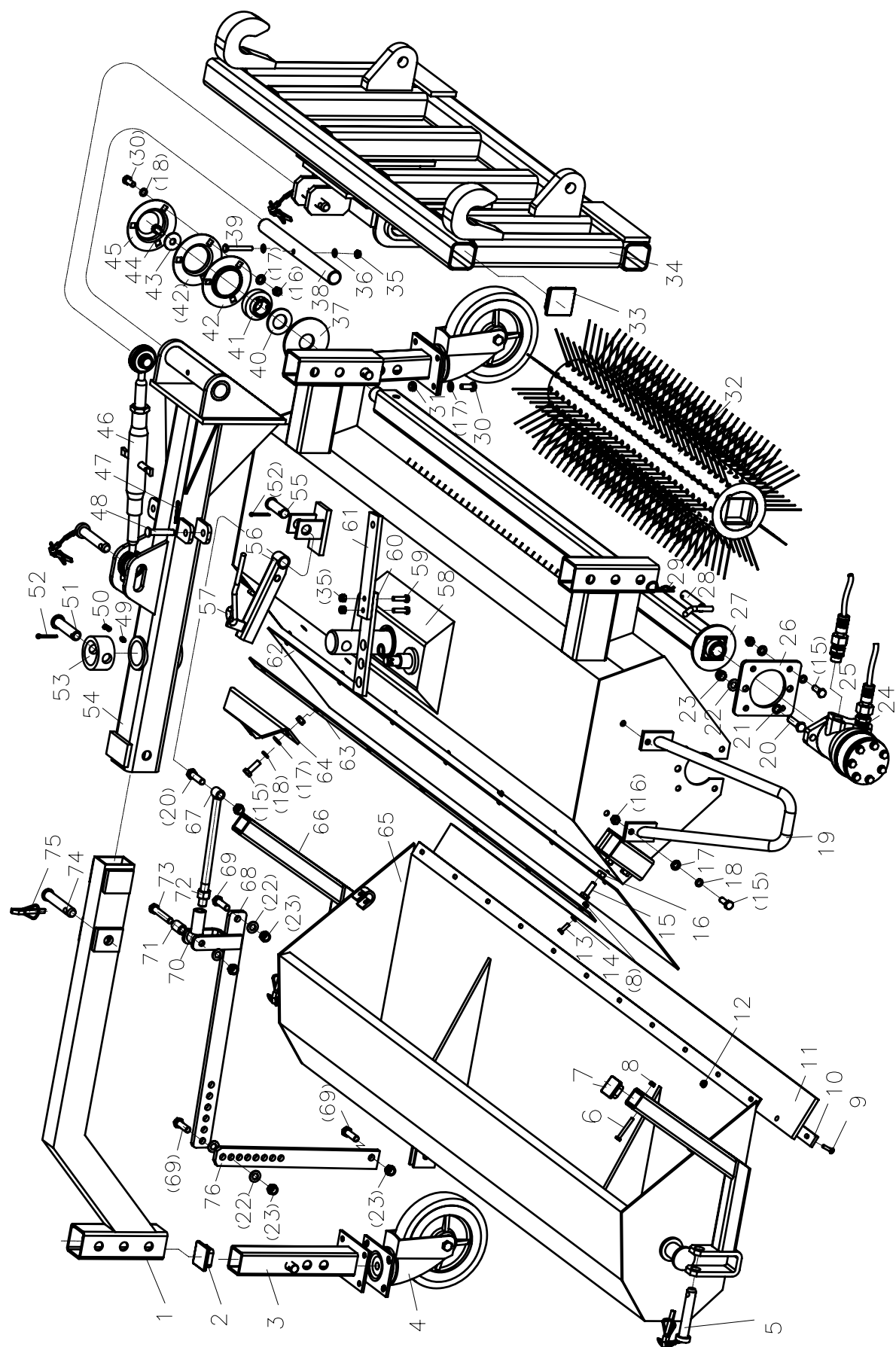
PARTS LIST.



PARTS LIST.

NO.	Part NO.	Name & Specifications	QTY	Remark
1	SDM150.00.024	Wheel kits support	1	
2	SDM150.00.191	Blocker 50x50	3	
3	SDM150.00.012	Wheel bracket	3	
4	SDM150Wheel 200x42	Wheel 200x42	3	
5	EF100.00.019	Combined lock pin	4	
6	GB5783-86	Bolt M6x50	2	
7	SDM150.00.189	Blocker 40x40	2	
8	GB 6184-86	Lock nut M6	9	
9	GB12-88	Scraper Blade Bolt M6X25	11	
10	SDM150.00.124	Pressure plate	1	
11	SDM150.00.125	Nylon plate	1	
12	GB 6177-86	NutM6	11	
13	GB 5783-86	Bolt M6x14	7	
14	GB 97.1-85	Plain washer 6	7	
15	GB 5783-86	Bolt M10x30	8	
16	GB 6170-86	Nut M10	11	
17	GB 97.1-85	Plain washer 10	23	
18	GB 93-87	Spring washer 10	11	
19	SDM150.00.028	Block plate weldment	1	
20	GB 5783-86	Bolt M12x45	3	
21	GB 93-87	Spring washer 12	2	
22	GB 97.1-85	Plain washer 12	7	
23	GB 6184-86	Lock nut M12	7	
24	SDM150.00.101	Hydraulic pump	1	
25	SDM150.00.199	Hose (2.98 metres long)	2	
26	SDM150.00.126	Pump fixing plate	1	
27	SDM150.00.013	Shaft pipe weldment	1	
28	SDM150.00.108	Pin	3	
29	ZL-25.104	R pin	4	
30	GB 5783-86	Bolt M10x25	15	
31	GB 6184-86	Lock nut M10	12	
32	SDM150.00.011	Roller brush	2	
33	SDM150.00.155	Blocker 60x60	4	
34	SDM150.00.018	Front linkage	1	
35	GB 6184-86	Lock nut M8	3	
36	GB97.1-85	Plain washer 8	2	
37	GB/T 5287-1985	Large washer	1	
38	SDM150.00.145 P	in shaft	1	
39	GB 5783-86	Bolt M8x60	1	

PARTS LIST.



PARTS LIST.

NO.	Part NO.	Name & Specifications	QTY	Remark
40	SDM150.00.113	Washer 30	1	
41	SDM150.Bearing SB206	Bearing SB206	1	
42	SDM150.00.184	Bearing cover	2	
43	GB 96-85	Bigger washer	1	
44	GB5783-86	Bolt M12x25	1	
45	SDM150.00.185	Bearing potecter	1	
46	MZ105.024	Adjusting pole	1	
47	GB 91-86	Split pin 4x35	1	
48	GB 882-1986	Pin shaft 12X60	1	
49	GB 1152-89	Grease nipple M6	1	
50	SDM150.00.192	Nipple sleeve	1	
51	GB 882-1986	Pin shaft 20X85	1	
52	GB 91-86	Split pin 5x35	2	
53	SDM150.00.158	Spacer	1	
54	SDM150.00.021	Middle connecting pipe	1	
55	GB 882-1986	Pin shaft 20X60	1	
56	SDM150.00.019	Bucket controlling pole	1	
57	SDM150.00.159	Line $\phi 9$	1	
58	SDM150.00.016	Deck weldment	1	
59	GB 5783-86	Bolt M8x30	2	
60	SDM150.00.157	Upper plate	1	
61	SDM150.00.156	Down plate	1	
62	SDM150.00.123	Rubber cover	1	
63	SDM150.00.122	Pressure plate for rubber cover	1	
64	SDM150.00.027	Middle connecting plate	1	
65	SDM150.00.015	Dirt bucket	1	
66	SDM150.00.026	Bucket support	2	
67	SDM150.00.022	Fitting pole	1	
68	SDM150.00.025	Upper connecting pole	1	
69	GB 5783-86	Bolt M12x40	3	
70	SDM150.00.023	Turning connector	1	
71	SDM150.00.196	Plastic sleeve	1	
72	GB 6170-86	Nut M16	1	
73	GB 5783-86	Bolt M12x65	1	
74	EF100.00.154	Pin	1	
75	200.56.011	Lock pin	1	
76	SDM150.00.114	Bracket connecting bucket and pole	1	

EF - OVERENSSTEMMELSESERKLÆRING DK

Fabrikant

Changzhou Han-Sun Machinery
Co., Ltd.
89 Huanbao 4th Road, Huanbao Industrial Park,
Hi-Tech, Changzhou, Jiangsu, P.R. China



Declare that the following machine:

Name: Hydraulic Sweep

Model: SB105

Description: Hydraulic Sweeper

Complies with the following directives:

- Machinery directive 2006/42/EC

Standards:

EN
EN ISO 12100:2010

常州汉森机械股份有限公司
CHANGZHOU
HAN-SUN MACHINERY CO., LTD

A handwritten signature in black ink, appearing to be 'J. Zhang', is written over the printed company name.

Angel 25/10/2021

name and date

signature

You can always find the newest version of
the manual and list of spareparts on
www.dk-tec.dk below the machine itself