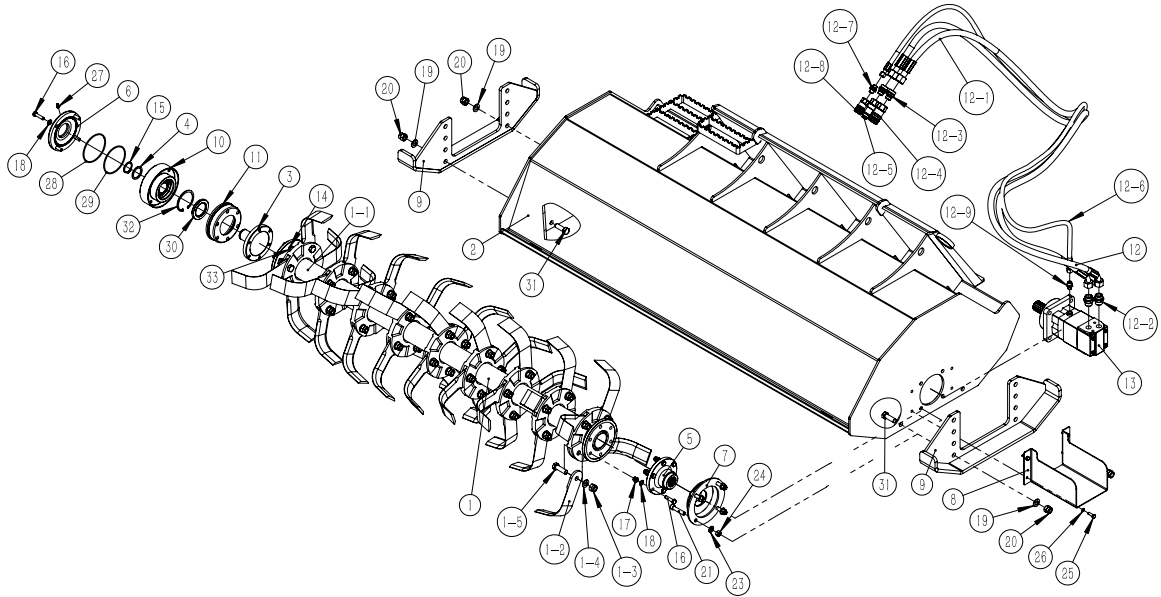


## PARTS LIST



No.	Part No.	Part Description	QTY
1	HRT72.1	ROTOR ASSEMBLY	1
1-1	HRT72.1.1	ROTOR WELDMENT	1
1-2	HRT72.1.2	TINE, BI-DIRECTIONAL TILLER	36
1-3	GB/T 889.2	LOCK NUT M16*1.5	36
1-4	GB/T 97.1	WASHER 16	36
1-5	GB/T 5786	BOLT HEX M16*1.5*50	36
2	HRT72.2	FRAME WELDMENT	1

3	HRT72.3	AXLE HEAD(LEFT)	1
4	HRT72.4	SNAP RING(LEFT)	1
5	HRT72.5	AXLE HEAD(RIGHT)	1
6	HRT72.6	COVER(LEFT)	1
7	HRT72.7	AXLE COVER WELDMENT	1
8	HRT72.8	MOTOR PROTECTOR	1
9	HRT72.9	SKID SHOE NON DRIVE	2
10	HRT72.10	BEARING ASSEMBLY(LEFT)	1
11	HRT72.11	DUST COVER	1
12	HRT72.12	HYDRALIC COMPONENTS	1
12-1	HRT72.12-1	OIL PIPE 01	2
12-2	GE18LR34ED	END STRAIGHT JOINT G3/4"-M27X1.5	2
12-3	GE18LRED	END STRAIGHT JOINT G1/2"-M27X1.5	2
12-4	KIS-PT-G04SP	FLAT FACED COUPLERS G1/2 FEMALE	1
12-5	KIS-PT-G04SP	FLAT FACED COUPLERS G1/2 MALE	1
12-6	HRT72.12-2	OIL LEAKING PIPE	1
12-7	GE10LR38EDOMD	END STRAIGHT JOINT G3/8"-M16X1.5	1
12-8	KIS-PT-G03SF	FLAT FACED COUPLERS G3/8 FEMALE	1
12-9	GE10LRMOED	END STRAIGHT JOINT G1/4"-M16*1.5	1
13	HRT72.13	HYD MOTOR	1
14	GB/T 93	SPRING WASHER 10	6
15	GBT 894.1	EXTERNAL CIRCLIPS 40	1
16	GBT 5783	BOLT HEX M10*40	10
17	GBT 6182	LOCK NUT M10	6
18	GB/T 97.1	WASHER 10	10
19	GB/T 97.1	WASHER 16	4
20	GBT 6182	LOCK NUT M16	4
21	GBT 70.1	HEX SOCKET HEAD BOLT	4
22	GB/T 93	SPRING WASHER 12	4
23	GB/T 97.1	WASHER 12	4
24	GB/T 6170	NUT HEX M12	4
25	GBT 5783	BOLT HEX M8*25	4
26	GB/T 93	SPRING WASHER 8	4
27	JB/T 7940.1	Greaser M8	1
28	GB/T 3452.1	O RING $\Phi$ 110X3.55	1
29	GB/T 3452.1	O RING $\Phi$ 106X3.55	1
30	GB/T 13871.1	OIL SEAL 55×80×8	1
31	GBT 5783	BOLT HEX M16*45	4
32	GB/T 893.1	CIRCLIPS FOR HOLES 80	1
33	GBT 5783	BOLT HEX M10*35	6